



# ARKANSAS DRINKING WATER UPDATE

Volume 31, No.3

ENGINEERING SECTION – DEPARTMENT OF HEALTH

Fall 2018

## Sampling Program Expands to 7 Samplers

Jeff Stone, P.E., Director

Due to the steady increase in Safe Drinking Water Act (SDWA) monitoring requirements, the Engineering Section has expanded the sampling staff to include a 7<sup>th</sup> drinking water quality sampler. Mr. Kaleb Lee joined the staff during August and will be working primarily in the southeast portion of the state.

The Arkansas drinking water program is relatively unique compared to other states regarding the amount of water quality monitoring performed by the Arkansas Dept. of Health (ADH). This compliance monitoring is paid for by the Public Water System Service Fees. This system saves water systems time and expense for sample collection, analysis, and shipping and also facilitates required data reporting to EPA. Also, this system facilitates ADH preparation of Consumer Confidence Reports on behalf of the water systems.

Water operators collect required monthly bacteriological water samples and typically utilize the ADH's state wide courier system to deliver those samples to the Public Health Laboratory (PHL). Almost all other required monitoring (sample collection and analysis) is performed by the ADH. Non-bacteriological monitoring includes a very long list of potential contaminants that have been added to the Safe Drinking Water Act (SDWA) over time.

Each year, over 1000 public water systems in Arkansas collect over 55,000 bacteriological samples and submits these samples to the Public Health Laboratory. During the 2018 state fiscal year which ended June 30, 2018, ADH water quality samplers collected an additional 15,000+ samples that were analyzed for potential contaminants including herbicides and pesticides, cyanotoxins, metals, nitrates, disinfection by products, radiochemical contaminants, and others. During state fiscal year 2018, water quality samplers drove over 230,000 miles collecting those samples. Due to their diligent efforts, water systems in Arkansas have stayed in compliance with SDWA monitoring requirements. During

calendar year 2017, aggregate compliance with SDWA monitoring requirements stood at 99.9%.

The monitoring burden has increased over time due in part to the Arkansas Department of Health's involvement in the SDWA's Unregulated Contaminant Monitoring Rules (UCMR). The Arkansas Department of Health is currently active in fulfilling the requirements of the 4<sup>th</sup> UCMR called UCMR4. This latest UCMR is particularly burdensome due to the inclusion of cyanotoxins that have to be collected during warmer months rather than year round.

There has been an overall trend in monitoring requirements to focus on warmer periods of the year where warmer water temperatures can affect water quality. Examples are lead and copper monitoring, disinfection by product monitoring and cyanotoxin monitoring. This trend combined with increased employee turnover has presented significant challenges to the monitoring program during summertime periods.

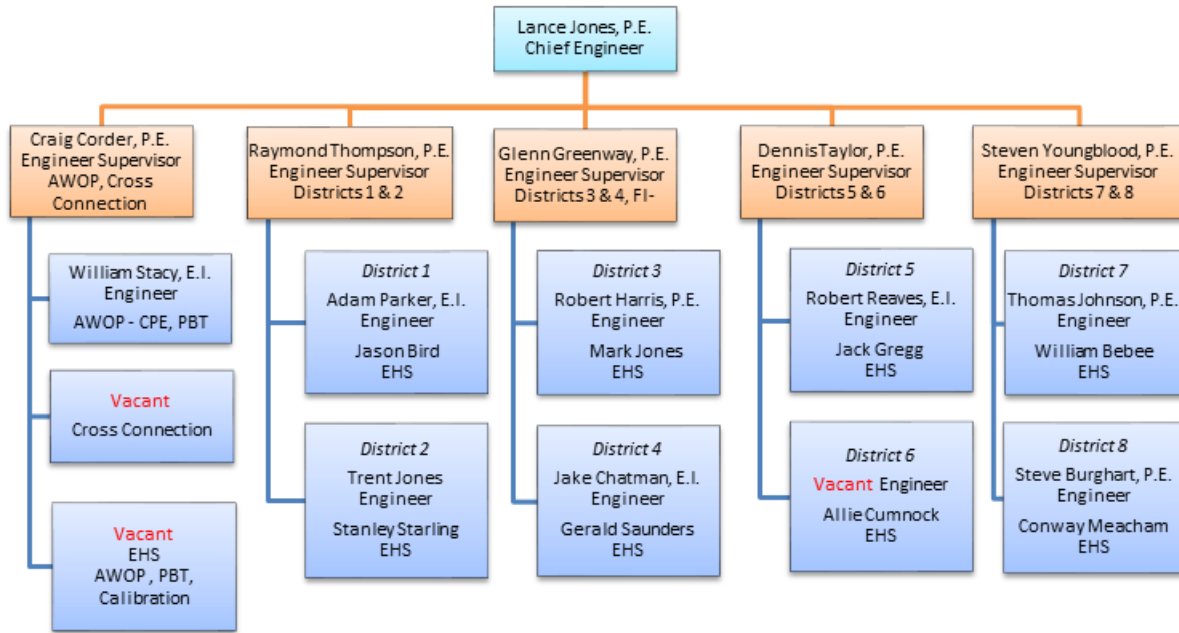
The water quality samplers have a busy schedule each week. Susan Corder does a great job planning efficient sampling routes that match up with PHL capacities. If there are questions or problems Susan can be reached at [susan.corder@arkansas.gov](mailto:susan.corder@arkansas.gov). Samplers have to stay on the move in order to complete their work each week. It helps a lot when water managers are able to assist the samplers gain access to sampling locations when needed.

The 7 samplers are listed below with the areas of the state that they normally work within.

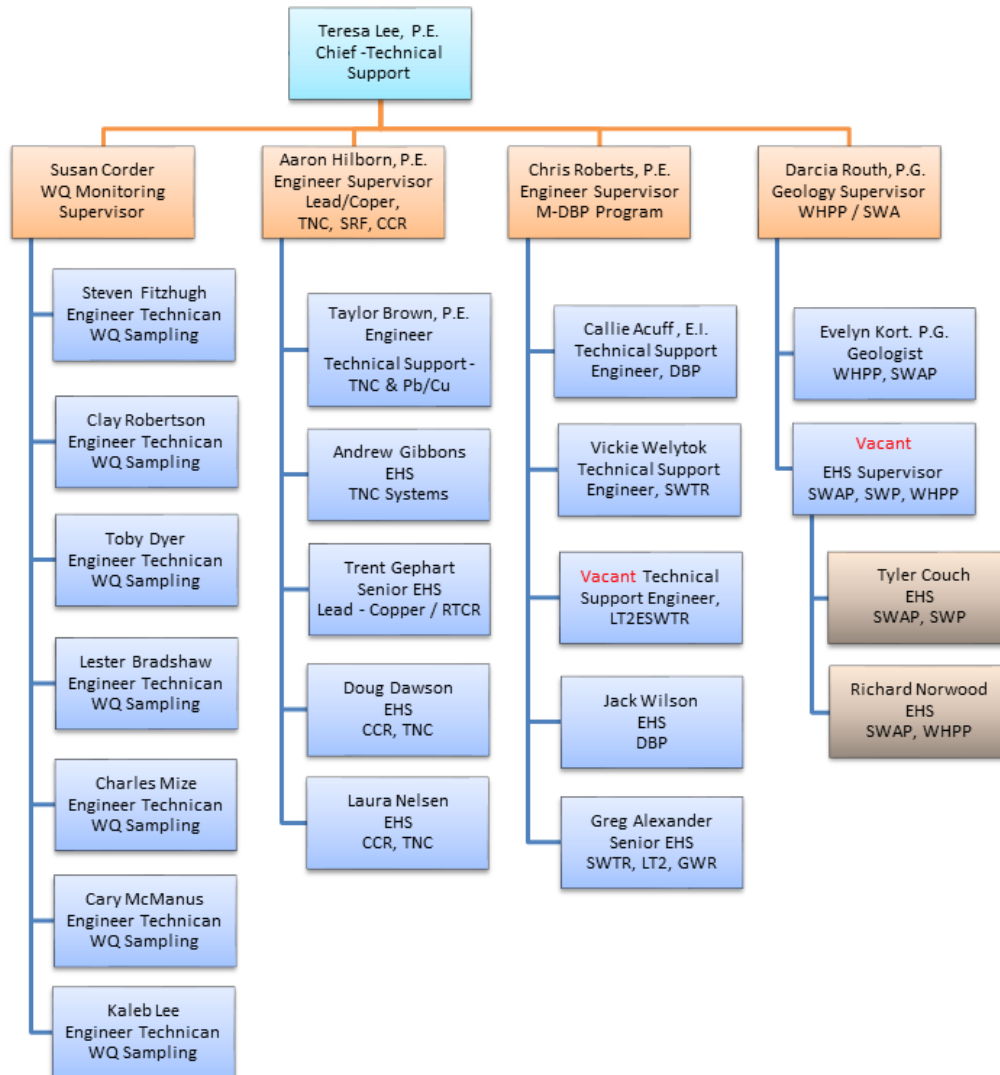
Steven Fitzhugh	Northwest Arkansas
Clay Robertson	Northeast and Central
Lester Bradshaw	Southwest Arkansas
Charles Mize	Northeast Arkansas
Cary McManus	Eastern Arkansas
Kaleb Lee	Southeast Arkansas
Toby Dyer	Western Arkansas

Inside the <i>Update</i>	Page
Current Staff	2
Board Member Training	3
Updated Source Water Assessments	4
Licensing Committee Report	6

## Current District Staff



## Current Technical Support Staff



## Board Member Training Available Through Communities Unlimited

Aaron Hilborn, P.E.

Water system boards are made up of people from varying backgrounds and serve for varying reasons. Some boards are staffed with current and/or former operators or other people intimately familiar with the production of drinking water and the management of that process. Others are staffed with local business people who may feel a need to give back or serve their community in some capacity. Regardless of experience, one thing that all water boards have in common is that the responsibility of administering the water system falls on their shoulders.

A water system that reliably produces a high quality product relies on its board to understand its role and execute it properly. In turn, these types of boards are staffed with individuals who are capable of performing their obligations and duties. These responsibilities can be broken down into five major categories: compliance, policy making, financial, personnel, and record-keeping.

Board member training is an excellent way to become more familiar with these essential responsibilities. Participation in a board member training event will help produce board members who are effective in their oversight of the water system, and consequently facilitate the ability of a water system to deliver safe drinking water to its customers.

Ongoing training is essential to roles throughout the drinking water industry. Board members are no different. Training can benefit board members who are new to drinking water production by presenting vital management concepts in one place and time. Furthermore, veteran board members can benefit due to the nature of the industry as changes are regularly made to add or update existing regulations.

For more information about scheduling a board training event, please contact Aaron Hilborn at [Aaron.Hilborn@Arkansas.gov](mailto:Aaron.Hilborn@Arkansas.gov)

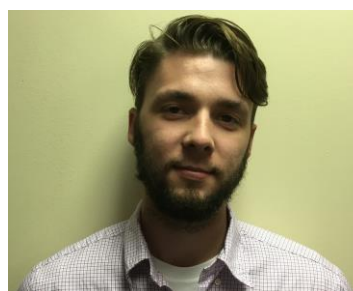
### Staff News:

**ARKANSAS DRINKING WATER UPDATE** is published quarterly by the Engineering Section, Arkansas Department of Health to inform readers of issues and activities affecting this industry. Articles and information in the newsletter can be reproduced without restriction if credit is given for the source. Potential contributors of articles for the **UPDATE** and persons wishing to be added to the mailing list should contact the Section at the address listed on the last page.



William "Seth" Beebe is the new Environmental Health Specialist for District 7. Seth received a B.S. in Biology from Lyon College in Batesville. Seth is originally from Alaska and is retired from the US Army. Before coming to work

at the ADH he worked as a Park Ranger for US Army Corps of Engineers at Greer's Ferry and then as a Corrections Officer for the Arkansas Department of Corrections in Newport.



Jake Chatman joins the Engineering Section as the District 4 Engineer. Jake, from Harrisburg AR, earned a B.S. in Civil Engineering from the University of Arkansas at

Fayetteville. He enjoys playing golf, watching college football, and following the St. Louis Cardinals



Penny Green is a new Administrative Specialist for the Engineering Section. Before coming to work at ADH she worked for the Arkansas State Police and before that In-Home Services at

ADH. She enjoys playing with her grandchildren, singing in the Praise Team at her church, fishing, and working outside.



Kaleb Lee has joined the Engineering Section, as an Engineer Technician. Kaleb will be working in the sample collection program and will primarily work in south Arkansas. Kaleb has a

BS in Biology from the University of Arkansas at Little Rock.

# How to Use Your Updated Source Water Assessment

Richard Norwood, GIS Specialist, SWPP

Source Water Protection Program (SWPP) staff at ADH are pleased to announce that we are in the process of releasing updated SWAP (Source Water Assessment Plan) Reports for community public water systems statewide. The release will be divided into two phases: the current phase of the release includes all surface water systems (lakes, rivers, springs, and GWUDI wells); the next phase will include all groundwater (well) systems. We anticipate the completion of the first phase of reports for all of the surface water systems to be sometime in November of 2018 then we will begin generating and mailing out reports for all groundwater systems.

Also provided with your report will be a supplemental DVD containing a digital copy of your 2018 Source Water Assessment. In addition to the report; you will find your historic SWAP Report, EPA guidance, GIS data, Google Earth location files, and a wealth of other tools and resources to enhance your local source water protection efforts.

The new SWAP Reports were generated using an updated and improved version of the SWAP Model that was developed by the USGS. As you likely remember, the SWAP Model is a geographic information system (GIS) model that was originally developed in the early 2000s in coordination with the USGS and the U of A's Center for Advanced Spatial Technologies (CAST) under the guidance of Lyle Godfrey. The original SWAP Reports were released back in 2002 and served to fulfill the requirements of the Safe Drinking Water Act (SDWA) Amendments of 1996 to "develop a source water assessment program within the States boundaries," to be administered, for the protection and benefit of public water systems."

The SWAP Report is a summary of all susceptibility analysis, vulnerability assessments, drinking water source data, and maps generated by the SWAP Model for each surface or groundwater source in your water system. Here is a detailed explanation of each of the above items:

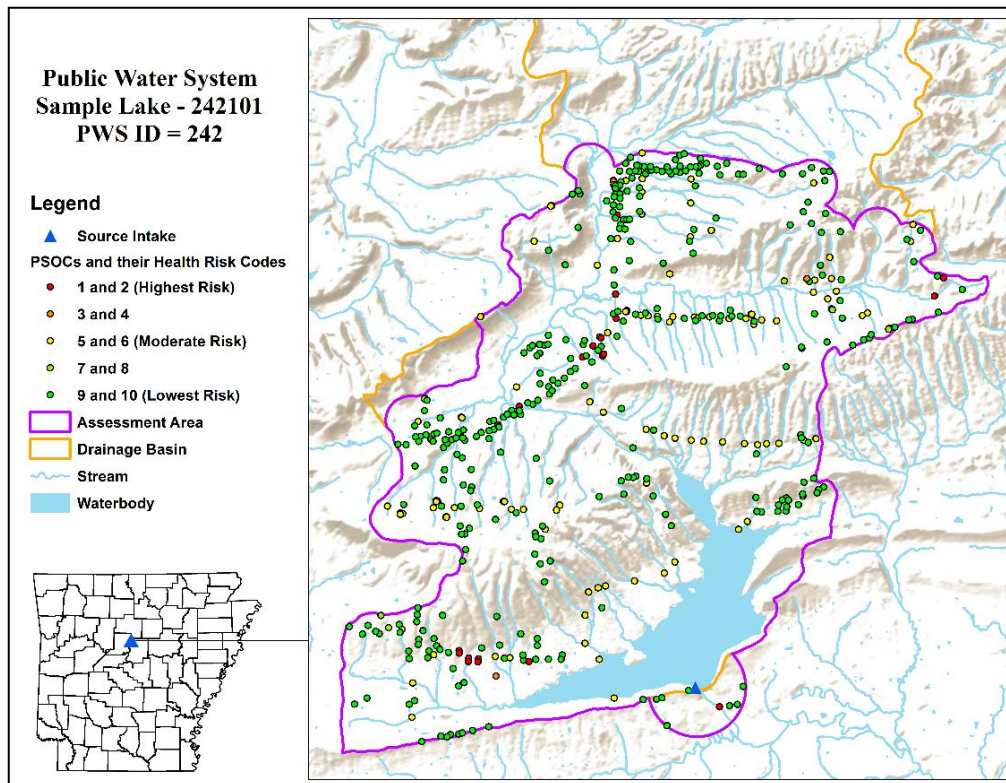
- Susceptibility Analysis:** Designates a high, medium, or low susceptibility to contamination by evaluating both historic water quality conditions and the intrinsic (natural) sensitivity of a source, recharge basin, or watershed. A low value indicates multiple barriers to contamination while a high value indicates few barriers to contamination.

PWS Source	High	Medium	Low
Sample Creek - 242101		X	
Sample Lake - 242201			X

- Vulnerability Assessment:** Lists the number of potential sources of contamination (PSOCs) relative to the distance from the source and the potential risk posed by the PSOC. A PSOC's risk is listed from highest to lowest and is characterized by its respective Health Risk Category with 1 representing the highest risk to public health (example: very large concentrated animal feeding operation) and 10 representing the lowest relative risk to public health (example: abandoned house which may contain hazardous substances). PSOCs appearing in the upper left corner pose the greatest risk and PSOCs appearing in the lower right corner pose the lowest risk.

PSOC Health Risk Category	Public Supply Lake					Total
	0-1mi	1-2mi	2-3mi	3-4mi	4-5mi	
1				1		1
2	1	1	6	8	4	20
3					64	64
4			1			1
5	1	12	28	47	21	109
6						
7					7	7
8				2	1	3
9	8	17	78	114	46	263
10		1		3		4
<b>Total</b>	<b>10</b>	<b>31</b>	<b>113</b>	<b>175</b>	<b>143</b>	<b>472</b>

- **Drinking Water Source Data:** This table includes data that was used to determine the susceptibility of a drinking water source.
  - For **surface water systems** this includes information such as median streamflow, main channel slope, average annual precipitation, historical water quality, and land use characteristics.
  - For **groundwater systems** this includes well construction data such as the presence of a proper-sized impermeable pad, aquifer location, proper venting, proper sealing, and whether the well is subject to flooding. In addition, assessment area data includes historical water quality, ecoregion, aquifer characteristics, aquifer recharge data, land use, slope, soil permeability, soil to bedrock depth, and rock type.
- **Maps:** For each surface water source there are two maps. The first is an overview map that includes: the intake location, source water assessment area, and watershed. The second map shows PSOCs categorized by their health risk codes within a given source water assessment area. For groundwater systems there is one map which includes the well location, wellhead protection area, and the PSOCs categorized by their health risk codes within a given wellhead protection area.



Example PSOC Map for Surface Water System

## Using Your SWAP Report to Develop a Local Source Water Protection Plan

The SWAP Report should be used as a basis for handcrafting a local source water protection plan. SWPP staff provides technical assistance to public water systems in developing or improving a local source water protection plans.

The key to success for any source water protection program is the involvement of the community, customers, and the governing board at the local level. Ideally, each local plan may be customized to both the actual and potential hazards of a given source water assessment area. Such a plan may be enacted by local source water protection teams. These teams can assist in gathering information for public education, developing contingency and emergency plans, as well as other local options for reducing the threat of drinking water source contamination. For more information and resources about developing a source water protection program please contact Tyler Couch, and for questions about your updated SWAP Report please contact Richard Norwood; both can be reached at 501-661-2623.

# REPORT OF THE

## Arkansas Drinking Water Advisory and Operator Licensing Committee

Martin Nutt, Training and Certification Officer

A quarterly meeting of the Arkansas Drinking Water Advisory and Operator Licensing Committee (Committee) was held on July 12, 2018. The quarterly meeting was held at 10:00 a.m., at the Arkansas Rural Water Association, Lonoke, Arkansas.

**Members present:**

Roger Moren, Chair-Elect, Sardis Water Assn (2019)

Lance McAvoy, Fort Smith Utility (2024)

**Member Absent:**

Lashun Thomas, Ph.D., P.E., UA Little Rock (2022)

Scott Boggs, Searcy Board of Water Utilities (2023)

**Department of Health (ADH) Staff & Guests present:**

Reginald Rogers, ADH Legal

Ida L Hampton, Administrative Specialist, ADH

Jeff Ford, Arkansas Rural Water Association

Aaron Benzing, P.E., Hawkins Weir Engineers (2021)

Jeff Stone, P.E., Executive Secretary; ADH

Bradley Scheffler, Chair Elect, Piggott Water/Wastewater (2020)

Martin Nutt, Training and Cert Officer, ADH

Jeremy Rowe, Arkansas Environmental Training Academy

Stone called the meeting to order, and welcomed all present to the Committee meeting. Stone introduced Lance McAvoy, Fort Smith Water Utility as the newest Committee member. He was appointed at the April 26, 2018 Board of Health meeting. The Committee welcomed McAvoy and thanked him for being willing to serve. The Committee held officer elections, confirming Moren as Chair and electing Scheffler Chair Elect. The Committee approved the February 8, 2018 & April 12, 2018 meeting minutes.

**OLD BUSINESS**

Nutt reported that the Committee had previously established the License Program would convert to the use of the 2017 version of ABC Standardized Water Treatment and Water Distribution license exams on January 1, 2019. He stated all needed steps were in place for the conversion, extensive steps were being taken to inform exam takers of the switch, exam prep documents were being provided, and that the trainers had begun tweaking their courses in preparation for the exams. He made the Committee aware that he participated in another ABC Exam Development Workshop in June starting the process of ABC's next exam version, using the same Needs-To-Know and exam format as the 2017 version.

Nutt stated the Reference Manual List had been revised as discussed during the last Committee meeting. The list was revised due to the heavily revised AWWA Water Supply Operator manual series and the need to recommend equally the new AWWA series and CSUS Office of Water Programs manual series. The Committee reviewed the revised list and agreed with its use.

**NEW BUSINESS**

Nutt reviewed the provided reciprocity chart for the North Dakota Water License program. The chart recommended the approval of license transfers provided equivalent training can be documented, certain combinations of licenses are held, and ADH Compliance Course is attended. After review, and discussion, the Committee voted to approve the chart.

Nutt led a discussion related to a workforce development grant that Brown Engineering is using to develop a high school level curriculum that as students work their way through the education program and its water plant simulation application, the students would ultimately qualify for some level of water license. Stone recapped meetings held by Brown Engineering staff, with Department of Education staff, AETA staff and Engineering Section staff participating, and he discussed concerns of possible regulation changes needed for the envisioned program and the need to support an effort trying to include younger people in our industry. Rowe discussed how the AETA could assist in the education component of the grant program. The discussion by the Committee was positive for the grants concept and the discussion concluded with a desire for the licensing program to continue its involvement in the project.

Nutt reviewed the provided 2018 EPA OpCert Guidelines Report which reports to EPA how the Arkansas Drinking Water Operator Licensing Program meets the SDWA Act, OpCert Program Guidelines within the Capacity Development Program. He briefly reviewed the report, noted his greatest concern was meeting

the program review guideline in which the program is relying heavily on the Committee's involvement to meet this guideline. He answered the Committees questions, and concluded by thanking the Committee for its review.

## COMMITTEE REPORTS

Stone in his Engineering Section Director's report indicated the Section's budget was stable. He then reviewed the substantial turnover in program staff or changes in duties being performed by staff due to promotions and lateral moves.

Stone provided a Program update stating the program will have future challenges with the revisions to the L&C Rule, and Perchlorate Rule on the horizon but he had no definite dates for the rules. He then reviewed the possible impacts on the Service Fees in the form of new routine monitoring requirements increasing collection and analysis cost, with these required to be met by service fees. He also indicated a lot of national attention for perfluorinated compounds and the potential for another SDWA rule. He reviewed how various changes in the program's cost have allowed the Section to delay fee increases. He discussed the recent Gillham Lake harmful algae bloom, noting the Corps of Engineers closed swimming beach, the Department of Environmental Quality samples showed absent or low toxin levels, and that Gillham Lake Regional Water District had stepped up their operation to address the concern. He concluded with a recap of the Water Provider Legislative Taskforce meetings he has been attending. He noted that the Taskforce had spent considerable time related to water systems that have difficulty serving the needs of their service area. He expected the Taskforce to propose some type of legislative initiative and that water systems should pay attention to the activities of the Taskforce.

Nutt started his License Update report by referencing the provided spreadsheet detailing exam performance information, noted no magical improvement in passing rates had occurred, that we continue to see the higher license grades performing lower than preferred. He noted the hidden passing rate in the numbers was first time test takers passing rates were higher, versus a large group of repeat exam takers keeping the overall passing rates low. The Committee then had an extensive discussion of the multifaceted reasons for the overall passage rates.

Nutt in his License Enforcement Effort report provided a handout to the Committee detailing enforcement actions. He noted that the list was growing, much of that is a result of the Section taking enforcement action against systems without a fully license operator. An operator holding an OIT instead of a full license would be an example. In those cases the enforcement is listed as a State Regulation violation rather than a SDWA violation lessening the severity of the violation. The list is predominated by smaller financially struggling systems.

Nutt in his General Program Update informed the Committee that the program was processing applications, exam results, and licenses, as quickly as possible but not as quickly as he preferred. The exam passing rates are creating operator turnover which means new applications to process and it is creating a much larger number of exams to process.

Rowe presented the Arkansas Environmental Training Academy Training Report reporting what the Academy offered last quarter 264 direct course training hours, in 15 locations, to 140 students. He noted the AETA had started offering specialty courses aimed at renewal training with the pump course and chlorination course being well attended.

Ford provided the Arkansas Rural Water Association training report detailing their training classes and attendance data for January through June 2018 with 272 direct course training hours, in 20 different water courses, to 613 students.

## OTHER BUSINESS – CHEEVERS

The Committee confirmed the next meeting date for October 11, 2018 and adjourned.

### NOTICE

The Arkansas Department of Health/Office of Oral Health has grant money available to upgrade old and outdated water fluoridation equipment. If you are interested, please send the following documents: engineering plans/schematic for engineering approval, a list of materials to be purchased for the project, and a letter of interest printed on water system stationary. For more information, contact the director of the Office of Oral Health:  
Lindy Bollen, Jr., DDS  
[Lindy.Bollen@arkansas.gov](mailto:Lindy.Bollen@arkansas.gov) 501.280.4111

## Mandatory Training Course Schedule

Most Current Listing is at: [www.healthy.arkansas.gov/eng/autoupdates/oper/mandtrngall.htm](http://www.healthy.arkansas.gov/eng/autoupdates/oper/mandtrngall.htm).  
Please contact the course sponsor to register for course well in advance of course date.

### WATER LICENSE EXAM SESSION NOT HELD END OF MOST COURSES.

(Please note all mandatory courses begin at 8:00 a.m.)

Mandatory Course Name	Start Date	Ending Date	Time	CITY	LOCATION	SPONSOR
Intermediate Treatment	10/01/18	10/15/18	TBD	Internet	<a href="http://www.sautech.edu/aeta/">http://www.sautech.edu/aeta/</a>	AETA
Basic Water Math	10/02/18	10/02/18	8:00 AM	Little Rock	CAW Clearwater Complex, 11 Clearwater Drive	AETA
Intermediate Distribution	10/2/18	10/4/18	8:00 AM	Lonoke	ARWA Training Facility, 240 Dee Dee Ln	ARWA
Applied Water Math	10/03/18	10/03/18	8:00 AM	Little Rock	CAW Clearwater Complex, 11 Clearwater Drive	AETA
ADH PWS Compliance	10/04/18	10/04/18	8:00 AM	Little Rock	CAW Clearwater Complex, 11 Clearwater Drive	ADH
Advanced Distribution	10/09/18	10/11/18	8:00 AM	Rogers	Rogers Water Utility, 521 South 2 <sup>nd</sup> Street	AETA
Intermediate Distribution	10/15/18	10/29/18	TBD	Internet	<a href="http://www.sautech.edu/aeta/">http://www.sautech.edu/aeta/</a>	AETA
Basic Treatment	10/23/18	10/25/18	8:00 AM	Camden	AR Env Training Academy, 4615 Spellman Road	AETA
Intermediate Treatment	10/23/18	10/25/18	8:00 AM	Clarksville	CLW (Operations Bld) 710 E Main (Hwy 64 East)	ARWA
Advanced Treatment	10/29/18	11/12/18	8:00 AM	Internet	<a href="http://www.sautech.edu/aeta/">http://www.sautech.edu/aeta/</a>	AETA
Intermediate Treatment	10/30/18	11/01/18	8:00 AM	Russellville	Tri-County Water, 5306 N Arkansas Ave	AETA
Advanced Distribution	11/06/18	11/08/18	8:00 AM	Lonoke	ARWA Training Facility, 240 Dee Dee Ln	ARWA
Basic Distribution	11/06/18	11/08/18	8:00 AM	Camden	AR Env Training Academy, 4615 Spellman Road	AETA
Advanced Distribution	11/12/18	11/26/18	TBD	Internet	<a href="http://www.sautech.edu/aeta/">http://www.sautech.edu/aeta/</a>	AETA
Advanced Treatment	11/27/18	11/29/18	8:00 AM	Lonoke	CLW (Operations Bld) 710 E Main (Hwy 64 East)	ARWA
Basic Water Math	11/27/18	11/27/18	8:00 AM	Jonesboro	Operations Facility, 105 W Johnson Ave	AETA
Applied Water Math	11/28/18	11/28/18	8:00 AM	Jonesboro	Operations Facility, 105 W Johnson Ave	AETA
ADH PWS Compliance	11/29/18	11/29/18	8:00 AM	Jonesboro	Operations Facility, 105 W Johnson Ave	ADH
Applied Water Math	12/03/18	12/17/18	TBD	Internet	<a href="http://www.sautech.edu/aeta/">http://www.sautech.edu/aeta/</a>	AETA
Basic Water Math	12/03/18	12/17/18	TBD	Internet	<a href="http://www.sautech.edu/aeta/">http://www.sautech.edu/aeta/</a>	AETA
Basic Treatment	12/04/18	12/06/18	8:00 AM	Little Rock	CAW Clearwater Complex, 11 Clearwater Drive	AETA
Basic Water Math	12/11/18	12/11/18	8:00 AM	Camden	AR Env Training Academy, 4615 Spellman Road	AETA
Applied Math	12/12/18	12/12/18	8:00 AM	Camden	AR Env Training Academy, 4615 Spellman Road	AETA
ADH PWS Compliance	12/13/18	12/13/18	8:00 AM	Camden	AR Env Training Academy, 4615 Spellman Road	ADH
Basic Water Math	12/18/18	12/18/18	8:00 AM	Lonoke	ARWA Training Facility, 240 Dee Dee Ln	ARWA
ADH PWS Compliance	12/19/18	12/19/18	8:00 AM	Lonoke	ARWA Training Facility, 240 Dee Dee Ln	ADH
Applied Water Math	12/20/18	12/20/18	8:00 AM	Lonoke	ARWA Training Facility, 240 Dee Dee Ln	ARWA

**2019 training schedule will be posted at this website as soon as the trainers release their schedules:**

<http://www.healthy.arkansas.gov/eng/autoupdates/oper/mandtrngall.htm>



## WATER OPERATOR LICENSE EXAMINATIONS SCHEDULE

The most current Exam Schedule is at: <http://www.healthy.arkansas.gov/eng/autoupdates/oper/operexam.htm>

**You must register for the exam 45 days in advance.** To register on the internet go to [www.healthy.arkansas.gov/eng](http://www.healthy.arkansas.gov/eng) and click on Operator Certification, then select Register- Water License Exam. To register by e-mail provide name, license exam desired, exam session site, and exam date in an email addressed to [ADH.Water.Licensing@arkansas.gov](mailto:ADH.Water.Licensing@arkansas.gov). You may register by phone with the Water Licensing Program at (501) 661-2623. Call (501) 661-2623, ask for Water Licensing Program.

Listed below are the dates and locations of examination sessions as scheduled, as of **December 1, 2017**. All Treatment and Distribution exam grades will be available at the sessions. Acceptable photo identification (Driver's License or equivalent) will be required to sit for an Exam. Cell phones, pagers and other electronic communication devices are not allowed. Non-Programmable calculators are allowed in exam sessions.

EXAM DATE	REGISTER DEADLINE	CITY	LOCATION	TIME
12/7/2018	10/23/2018	Fayetteville	Fayetteville Operations Center, 2435 S Industrial Dr	9:00 AM
12/7/2018	10/23/2018	Lonoke	ARWA Training Facility, 240 Dee Dee Ln	9:00 AM
12/7/2018	10/23/2018	Nashville	Carter Day Center, 200 Lake Nichols Drive	9:00 AM
12/14/2018	10/30/2018	Camden	AR Environmental Training Academy, 100 Carr Road	9:00 AM
12/14/2018	10/30/2018	Clarksville	CLW (Operations Bld) 710 East Main (Hwy 64 East)	9:00 AM
12/14/2018	10/30/2018	Jonesboro	Jonesboro CWL Office Training Rm, 400 E Monroe	9:00 AM
3/1/2019	1/15/2019	Fayetteville	Fayetteville Operations Center, 2435 S Industrial Dr	9:00 AM
3/1/2019	1/15/2019	Lonoke	ARWA Training Facility, 240 Dee Dee Ln	9:00 AM
3/7/2019	1/22/2019	Mtn. Home	Baxter Co OEM Training Facility, 170 Dillard Dr, Midway	9:00 AM
3/8/2019	1/22/2019	Camden	AR Environmental Training Academy, 100 Carr Road	9:00 AM
3/8/2019	1/22/2019	Clarksville	CLW (Operations Bld) 710 East Main (Hwy 64 East)	9:00 AM
3/8/2019	1/22/2019	Jonesboro	Jonesboro CWL Office Training Rm, 400 E Monroe	9:00 AM
5/1/2019	3/18/2019	Hot Springs	AWW&WEA Annual Conf, HS Convention Center	9:00 AM
6/7/2019	4/23/2019	Fayetteville	Fayetteville Operations Center, 2435 S Industrial Dr	9:00 AM
6/7/2019	4/23/2019	Lonoke	ARWA Training Facility, 240 Dee Dee Ln	9:00 AM
6/7/2019	4/23/2019	Nashville	Carter Day Center, 200 Lake Nichols Drive	9:00 AM
6/14/2019	4/30/2019	Camden	AR Environmental Training Academy, 100 Carr Road	9:00 AM
6/14/2019	4/30/2019	Clarksville	CLW (Operations Bld) 710 East Main (Hwy 64 East)	9:00 AM
6/14/2019	4/30/2019	Jonesboro	Jonesboro CWL Office Training Rm, 400 E Monroe	9:00 AM
9/5/2019	7/22/2019	Mtn. Home	Baxter Co OEM Training Facility, 170 Dillard Dr, Midway	9:00 AM
9/6/2019	7/22/2019	Fayetteville	Fayetteville Operations Center, 2435 S Industrial Dr	9:00 AM
9/6/2019	7/22/2019	Lonoke	ARWA Training Facility, 240 Dee Dee Ln	9:00 AM
9/13/2019	7/30/2019	Camden	AR Environmental Training Academy, 100 Carr Road	9:00 AM
9/13/2019	7/30/2019	Clarksville	CLW (Operations Bld) 710 East Main (Hwy 64 East)	9:00 AM
9/13/2019	7/30/2019	Jonesboro	Jonesboro CWL Office Training Rm, 400 E Monroe	9:00 AM
9/18/2019	8/4/2019	Hot Springs	ARWA Conference, HS Convention Center	9:00 AM
12/6/2019	10/22/2019	Fayetteville	Fayetteville Operations Center, 2435 S Industrial Dr	9:00 AM
12/6/2019	10/22/2019	Lonoke	ARWA Training Facility, 240 Dee Dee Ln	9:00 AM
12/6/2019	10/22/2019	Nashville	Carter Day Center, 200 Lake Nichols Drive	9:00 AM
12/13/2019	10/29/2019	Camden	AR Environmental Training Academy, 100 Carr Road	9:00 AM
12/13/2019	10/29/2019	Clarksville	CLW (Operations Bld) 710 East Main (Hwy 64 East)	9:00 AM
12/13/2019	10/29/2019	Jonesboro	Jonesboro CWL Office Training Rm, 400 E Monroe	9:00 AM

The above exam session information is subject to change. You should confirm this information just prior to the scheduled examination period. Also, the latest and complete exam schedule information can be viewed on the Internet at: < <http://www.healthy.arkansas.gov/eng/autoupdates/oper/operexam.htm> >.

**Remember, you must register for the exam 45 days in advance. Application for License is not registration for an exam**  
Please verify that your license application has been filed with this office and that the required exam fee for each exam has been paid. The license exams require significant preparation prior to sitting for the exam. The preparation must include extensive study utilizing the study guide and recommended reference manuals/materials. Credit for the mandatory Certification Training Courses must be obtained before taking an exam. Copies of your training documentation must be provided when registering for an exam or provide documentation of its attendance by the exam session.

# WATER OPERATOR LICENSES ISSUED

March 1, 2018 through May 31, 2018

LICENSEE NAME	GRADE/TYPE	SYSTEM NAME
ADAMS LINSLEY	T - IV	CROSSETT WATER COMMISSION WEST ASHLEY COUNTY WATER ASSN
ARENDS PHILIP	D - III & T - IV	NO WATER SYSTEM OF RECORD
BAUGH BRADLEY	T - II	ARSENAL WATER SYSTEM
BENSON JEREMY	D - II	SPRINGDALE WATER UTILITIES
BRADEN JEFF	D - IV	ARK STATE PARK MT MAGAZINE
BROWN RODNEY	D - I & T - II	KEISER WATERWORKS
CAMPBELL HUNTER	D - III	MOUNT OLIVE WATER ASSOCIATION
CANTER JOHN	T - II	SUBIACO ACADEMY WATERWORKS
CATER NICKLOS	D - I	MONTICELLO WATER DEPARTMENT
COOK GARRETT	D - I	PIGGOTT WATERWORKS
FORRESTER DANIEL	D - III & T - III	CENTRAL ARKANSAS WATER
FRESHWATER COY	D - II	SPRINGDALE WATER UTILITIES
GAHAGAN MARC	D - IV & T - IV	CARROLL-BOONE WATER DISTRICT
GILLESPIE FRANK	D - IV	ARK STATE PARK MT MAGAZINE
GOODMAN GREGORY	T - II	LIBERTY UTILITIES
HUGHES KENTON	D - II	WARD WATERWORKS
HUNT LUCAS	T - I	WYNNE WATERWORKS
HUTCHISON JEREMY	D - III	SILAM SPRINGS WATERWORKS
KENNEDY CLIFFORD	D - IV	FORT SMITH WATER UTILITIES
KIMBLE KENNETH	D - I	POCAHONTAS WATERWORKS
LOVE TRACIE	T - II	MAGNOLIA WATERWORKS
LOVELL GREGORY	T - I	HARRISBURG WATERWORKS
MARTIN ERIC	D - I	DEVALLS BLUFF WATERWORKS
MCMAHAN MICHAEL	T - II	EL DORADO WATERWORKS
MOODY DANNY	T - II	DELL WATERWORKS
MORRIS FRANK	D - IV	CENTRAL ARKANSAS WATER
MUELLER JOHN	D - I	LINCOLN WATERWORKS
OLIVER STEVEN	D - I	BENTON WATERWORKS
PROFFITT JONATHAN	D - IV	CENTRAL ARKANSAS WATER
RICH MATTHEW	T - IV	BEAVER WATER DISTRICT
RIVETT DESMOND	D - IV & T - IV	CARROLL-BOONE WATER DISTRICT
SANDERS GLEN	T - III	GOSNELL WATER ASSOCIATION
SKINNER BOBBIE	D - IV	MC CRORY WATERWORKS
SKINNER JUSTIN	T - I	CLARENDON WATERWORKS
SLOAN TRAIL	D - II	SPRINGDALE WATER UTILITIES
STEVENS JARON	D - IV	GRAVETTE WATERWORKS
TAYLOR TOMMY	D - I	WARD WATERWORKS
THOMAS GERALD	D - II	OXFORD WATERWORKS
TILLERY JOSHUA	D - IV	HOT SPRINGS UTILITIES
WALTERS DAVID	T - II	CARLISLE WATERWORKS
WEAVER JOSHUA	D - III & T - III	WYNNE WATERWORKS
WELLS AUSTIN	D - I	CEDARVILLE WATERWORKS
WHISENHUNT JAMES	T - IV	TEXARKANA WATER UTILITIES
WHITLOW TAMARA	D - VSS	WINTHROP WATER ASSOCIATION
WILLIS CLAYTON	D - III	FAYETTEVILLE WATERWORKS
WOODARD WESLEY	D - II	BODCAW RURAL WATER SYSTEM
YOUNG KENNETH	T - II	LIBERTY UTILITIES

# Major Monitoring, MCL, Treatment Technique, & Licensing Violations

Community & Nontransient Noncommunity Public Water Systems, April –June, 2018

ALTHEIMER WATERWORKS	PN 4, 5	NEW HOPE WATER ASSN	Dmon 4
ATKINS WATER SYSTEM	DBPR 4, 5, 6	NEW LONDON	DBPR 4, 5, 6
BELLA VISTA POA	DBPR 4, 5, 6	NORTH HOWARD RWA	DBPR 4, 5, 6
BENTON-WASH REG PWA	Tmon 4	ODEN-PENCIL BLUFF WA	Dmon 5
BODCAW RURAL WATER	DBPR 4, 5, 6	ODEN-PENCIL BLUFF WA	DBPR 4, 5, 6
CASA WATER DEPT	DBPR 4, 5, 6	OLD UNION WATER ASSN	DBPR 4, 5, 6
CAVE SPRINGS	OperLic 5, 6	PANGBURN WATERWORKS	PN 4, 5
CAVE SPRNGS	PN 4	PICKENS WATERWORKS	OperLic 4, 5, 6
CAVE SPRINGS	Bmon 4	PICKENS WATERWORKS	PN 4
CLARENDON	OperLic 5, 6	PRAIRIE GROVE	DBPR 4, 5, 6
COTTON PLANT	PN 4, 5	RAMBO WATER DIST. #1	IMCL 4, 5, 6
COTTONWOOD WA	Bmon 5	SOUTHWEST ARKANSAS	DBPR 4, 5, 6
DELL WATERWORKS	GWRmon 4	SPADRA GOOSE CAMP WA	Dmon 4
DES ARC WATER WORKS	DBPR 4, 5, 6	SWIFTON WATERWORKS	PN 4
DES ARC WATERWORKS	Dmon 4	TAYLOR WATERWORKS	PN 4
E CASS WATER SUPPLY	LCR 4	TRI COUNTY WATER	DBPR 4, 5, 6
EAST LOGAN CO RURAL	DBPR 4, 5, 6	WABBASEKA	OperLic 4, 5, 6
EAST MONROE CO WATER	DBPR 4, 5, 6	WALKER WATER ASSN	Bmon 4, 5
EAST MONROE CO WATER	Dmon 4	WASHINGTON WATER	DBPR 4, 5, 6
EAST MONROE CO WATER	PN 6	AUTHORITY	
EVENING SHADE	Bmon 4	WHEATLEY WATERWORKS	Dmon 4
FREE HOPE WATER ASSN	OperLic 4	WHEATLEY WATERWORKS	DBPR 4, 5, 6
GILMORE WATERWORKS	OperLic 4	WIEDERKEHR VILLAGE	SWTR 4, 5
GILMORE WATERWORKS	PN 6	WIEDERKEHR VILLAGE	PN 4, 5, 6
HARMONY WATER ASSN	DBPR 4, 5, 6	WILLISVILLE WATERWORKS	OperLic 5, 6
HOPE WATER AND LIGHT C	DBPR 4, 5, 6	WILMOT WATERWORKS	GWRmon 6
LEE COUNTY WATER ASSN	DPBR 4, 5, 6	WINTHROP WATERWORKS	OperLic 6
LEE COUNTY WATER ASSN	Dmon 4		
LITTLE RIVER CO RDA	DBPR 4, 5, 6		
LOST BRIDGE VILLAGE	DBPR 4, 5, 6		
MARION COUTNY RWD	DBPR 4, 5, 6		
MARVELL RURAL WATER	OperLic 5, 6		
MARVELL WATERWORKS	OperLic 5, 6		
MARVELL WATERWORKS	LCR 4		
MILLTOWN-WASHBURN	DBPR 4, 5, 6		
MONTGOMERY CO RPWA	DBPR 4, 5, 6		
MORO WATERWORKS	DBPR 4, 5, 6		
MORRISON BLUFF WATER	DBPR 4, 5, 6		
MOUNT IDA WATERWORKS	DBPR 4,4,6		
MOUNT IDA WATERWORKS	Dmon 4		
MOUNT IDA WATERWORKS	PN 6		

**KEY:** Bmon = Bacti Monitoring; BMCL = Bacti MCL; CCR = Consumer Confidence Rule; Dmon = Disinfection By Product Rule Monitoring; DBPR=Disinfection By Product Rule MCL or Treatment Technique; GWRMCL=GWR Treatment Technique; GWRmon= GWR Monitoring or Reporting; PN = Public Notice Rule Tmon = SWTR Major Monitoring; TMCL = SWTR Treatment Technique; SWTR= Various SWTR requirements; Failure to Filter; RMCL = Radiochemical MCL; FMCL = Fluoride MCL; IMCL=Inorganic Chemical MCL; SMCL = Synthetic Chemical MCL; OperLic = Operator Licensing; 4=April 2018, 5 = May 2018, 6=June 2018

Return Service Requested

PRINTED ON RECYCLED PAPER

### AWW&WEA District Meetings

See also the Division's web site [www.healthyearkansas.com/eng/](http://www.healthyearkansas.com/eng/) for updates.

DATE	TIME	CITY	LOCATION	SPONSOR
<u>November, 2018</u>				
No Meeting Scheduled				
1	5:30 PM	Fort Smith	Western Sizzlin	AR Valley District, AWW& WEA
1	5:00 PM	TBA		Western District, AWW&WEA
8	5:00 PM	West Memphis	Dog Track	Central District, AWW&WEA
8	5:00 PM	Pleasant Plains	Dog Track	Eastern District, AWW&WEA
14	8:30 AM	Berryville	Tadpole's Catfish Barn	North Central District, AWW&WEA
15	6:00 PM	Hope	Community Center	Northwest District, AWW&WEA
15	12:30 PM	Jonesboro	UA Community College	Southwest District, AWW&WEA
20	6:00 PM	McGehee	Ron's Catfish	Northeast District, AWW& WEA
20	6:00 PM	McGehee	Hoots BBQ	Southeast District, AWW&WEA
<u>December, 2018</u>				
No Meeting Scheduled				
6	5:00 PM	TBA		Southwest District, AWW&WEA
6	5:30 PM	Fort Smith	Western Sizzlin	Central District, AWW&WEA
12	8:30 AM	Fayetteville	TBA	Western District, AWW&WEA
13	8:00 AM	Russellville	Holiday Inn	Northwest District, AWW&WEA
13	6:00 PM	Brinkley		AR Valley District, AWW&WEA
13	5:00 PM	Pleasant Plains	Tadpole's Catfish Barn	Eastern Central District, AWW&WEA
18	6:00 PM	Monticello	Q&Y House	North Central District, AWW&WEA
27	12:30	TBA		Southeast District, AWW&WEA
27	12:30	TBA		Northeast District, AWW&WEA
<u>January, 2019</u>				
No Meeting Scheduled				
TBA				
TBA				
3	5:00 PM	TBA		AR Valley District, AWW&WEA
9	8:30 AM	Bentonville	Community Center	Southeast District, AWW&WEA
10	6:00 PM	Des Arc	Dondees	Western District, AWW&WEA
10	5:00 PM	Pleasant Plains	Tadpole's Catfish Barn	Central District, AWW&WEA
17	6:00 PM	Texarkana	TBA	Northwest District, AWW&WEA
17	12:30 PM	Lake City	Winwater	Eastern District, AWW&WEA
17	12:30 PM	Lake City	Winwater	North Central District, AWW&WEA
17	12:30 PM	Lake City	Winwater	Southwest District, AWW&WEA
17	12:30 PM	Lake City	Winwater	Northeast District, AWW&WEA