



# ARKANSAS

## DEPARTMENT OF HEALTH

**Nathaniel Smith, MD, MPH, Director and State Health Officer**

### **Outbreak Response/Epidemiology Influenza Weekly Report Arkansas 2017-2018**

---

**Week Ending Saturday 04/07/2018**

---

**Dirk Haselow, MD, PhD**

State Epidemiologist, Medical Director, Outbreak Response

**Shirley Louie, MS, CIH**

Deputy State Epidemiologist, Director, Center for Public Health Practice

**Prepared by:**

**Haytham Safi, MD, MPH**

*Influenza Surveillance Coordinator*

[Haytham.Safi@Arkansas.gov](mailto:Haytham.Safi@Arkansas.gov)

501-661-2920

**Quinyatta Mumford, MPH, CHES**

**Mike Cima, PhD**

*Public Health Preparedness Epidemiologists*

**Reviewed by:**

**Lori Simmons, MS, Branch Chief, Epidemiology**

---

**April 10, 2018**

During the flu season the Arkansas Department of Health (ADH) produces a Weekly Influenza Report for clinicians. The report provides information on flu activity in the state. The report also compares influenza like illness (ILI) in Arkansas to activity in the U.S. ADH receives reports of only a fraction of flu cases. Therefore, it is important to understand that the information in the weekly update is representative of the timing and location of activity, but it does not reflect the overall burden of disease. It is presumed that there are many more people actually affected than the report shows. Clinicians and policy makers may find the report helpful in terms of communicating to colleagues and patients about the current status of the flu season.

### **Report Key Points:**

- For Week 14, Arkansas reported “Local” activity to the Centers for Disease Control and Prevention (CDC) for geographic spread of influenza, and “Minimal” or 1/10 for ILI intensity.
- Since October 1, 2017, over 53,000 positive influenza tests have been reported to the ADH online database by health care providers. In Week 14, 30 counties reported influenza cases. The majority of reports came from Washington, Pulaski, Craighead, Benton, Faulkner, Sebastian, White, Cleburne, Jackson, Jefferson, Logan, and Lonoke.
- Among total flu antigen tests that can distinguish between influenza A and B virus types, 62 percent were influenza A, and 38 percent were influenza B.
- Private labs reported 11 positive PCR flu tests this week: 1 positive for influenza A, 10 positives for influenza B. At the ADH lab, one sample tested negative this week.
- About 1.2 percent of patients visiting emergency rooms this week were there for ILI. Less than 1 percent of outpatient visits were for ILI.
- The average school absenteeism rate last week was 6.0 percent among public schools.
- To date, 215 influenza-related deaths have been reported in Arkansas this flu season, 210 among adult persons and 5 pediatric deaths. CDC has reported a total of 142 pediatric deaths nationwide this season.
- Since October 1, 2017, 59 facilities including 47 nursing homes have reported influenza outbreaks.
- The proportion of deaths reported to the National Center for Health Statistics attributed to pneumonia and influenza (P&I) was below the system-specific epidemic threshold.
- For Week 13, the geographic spread of influenza was reported as widespread in 11 states; Guam, Puerto Rico and 26 states reported regional activity; the District of Columbia and 10 states reported local activities; the U.S. Virgin Islands and three states reported sporadic activities.
- You can report flu year-round and view the weekly influenza report during the influenza season at: <http://www.healthy.arkansas.gov/programs-services/topics/influenza>.  
You can also access the reporting website directly at: <https://FluReport.ADH.Arkansas.gov>

### **For Additional National and International Influenza Surveillance Information:**

**World Health Organization (WHO):** [http://www.who.int/influenza/gisrs\\_laboratory/flunet/en/index.html](http://www.who.int/influenza/gisrs_laboratory/flunet/en/index.html).

**CDC - Seasonal Influenza (Flu) - Weekly Report:** <http://www.cdc.gov/flu/weekly/>

# 2017-2018 Influenza Outbreak Response/Epi Report (Week 14: 04/01/18 – 04/07/18)

## Death Report for Week 14

- Deaths from all causes: 663
- Deaths due to Pneumonia: 59
- PCR confirmed Flu Deaths: 0
- Death Certificate or Flu Antigen only: 5

## Cumulative Flu Deaths since 10/01/2017

- PCR confirmed Flu deaths: 27
- Death Certificate or Antigen only: 192
- Cumulative Flu deaths: 215

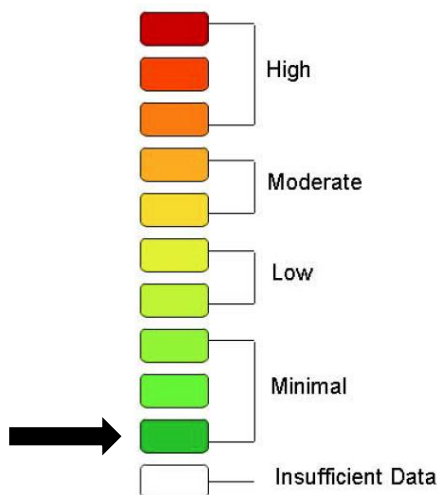
## ER Visits

- **Week Ending: 04/07/2018**  
Weighted Average: 1.2%  
– Total Visits: 19,641  
– Visits with ILI: 236
- **Previous Week**  
Weighted Average: 1.4%  
– Total Visits: 20,210  
– Visits with ILI: 274

## Total Flu-Related Hospital Admissions

- **PCR Confirmed:**  
– Cumulative: 848  
– Week ending 04/07/2018: 3
- **Antigen Positive:**  
– Cumulative: 1,804  
– Week ending 04/07/2018: 9

## Weekly Arkansas ILI Intensity Level Reported by Sentinel Providers



## PCR Lab Confirmed Influenza Week 13

- Total Cases since 10/01/2017: 5,509
- Week ending 04/07/2018: 11

PCR Tests	ADH Lab Week 14	Other Labs Week 14	Cumulative Cases Since 10/01/2017
A+	0	1	2,939
B+	0	10	2,312
B/Victoria	0	0	4
B/ Yamagata	0	0	37
H1N1+	0	0	30
H3+	0	0	165
Unsubtypeable	0	0	22
<b>Total</b>	0	11	5,509
Negative	1	--	--

## PCR Confirmed Influenza Cases since 10/01/2017

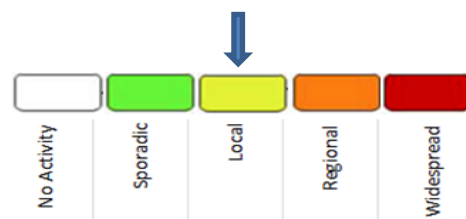
Age Groups	PCR+	Hospitalized	Deaths
0-4 yr.	794	46	0
5-18 yr.	1445	29	3
19-24 yr.	225	12	0
25-44 yr.	693	42	3
45-64 yr.	1054	217	3
>= 65 yr.	1280	502	18
Unknown	18	0	0
<b>Total</b>	5,509	848	27

## School Absenteeism\*

Week Ending: 04/07/2018  
 - Percent Absent: 6.01  
 - Previous Week: 6.52

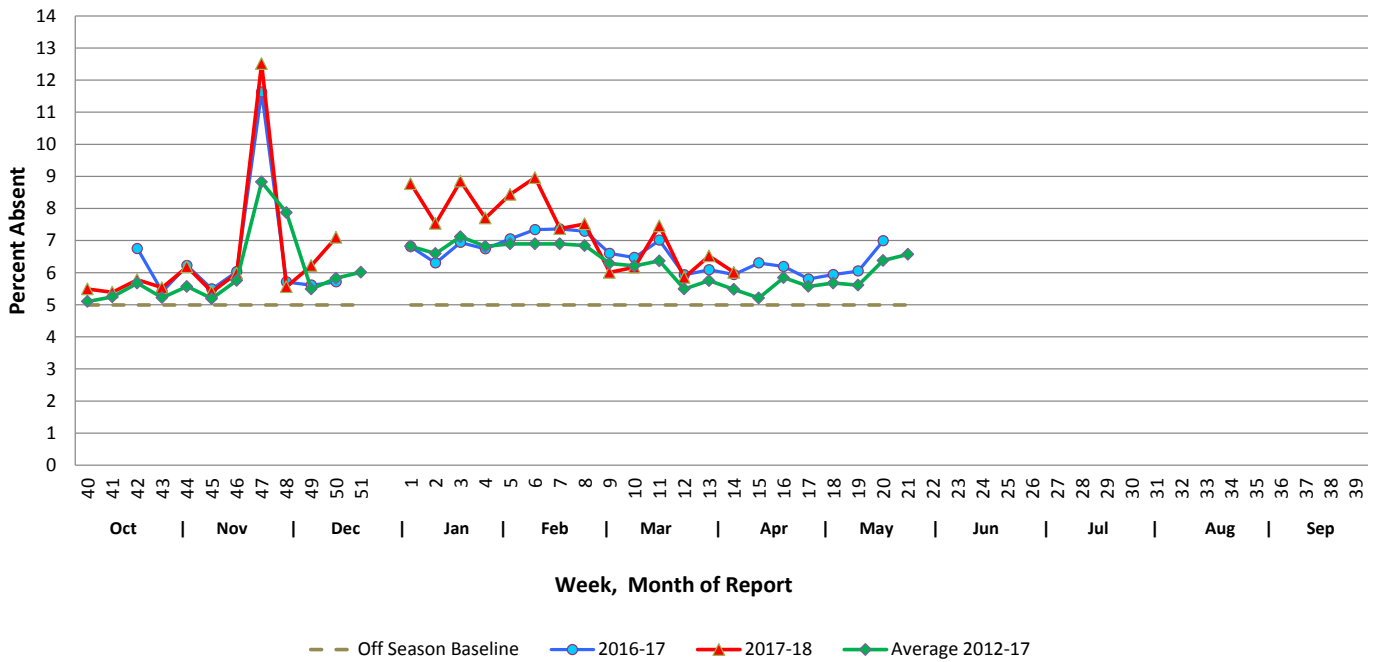
\* Average daily absenteeism for all public schools during this reporting week.

## Geographic ILI Activity Level Reported for Week 14:

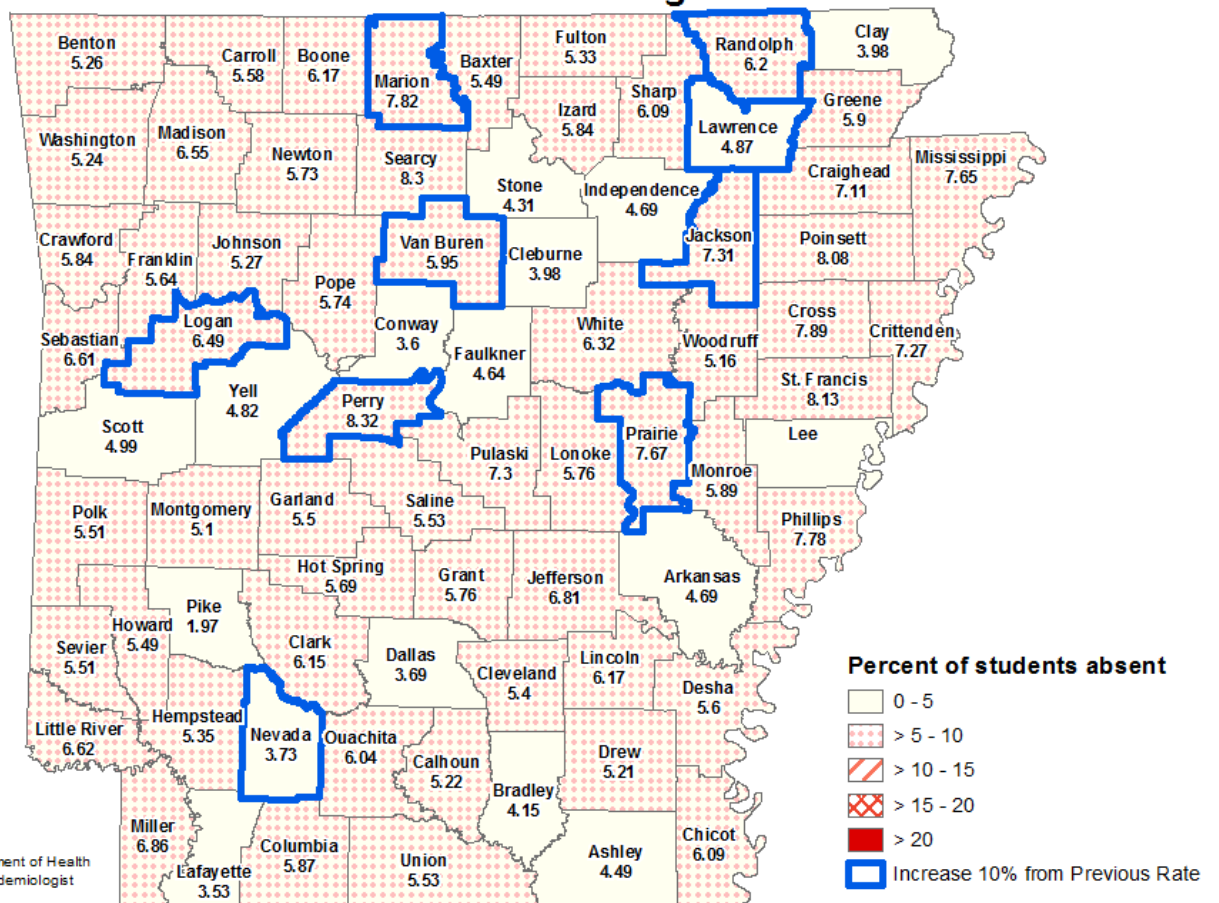


# School Report

## Weekly School Absenteeism Rates, Arkansas Public Schools



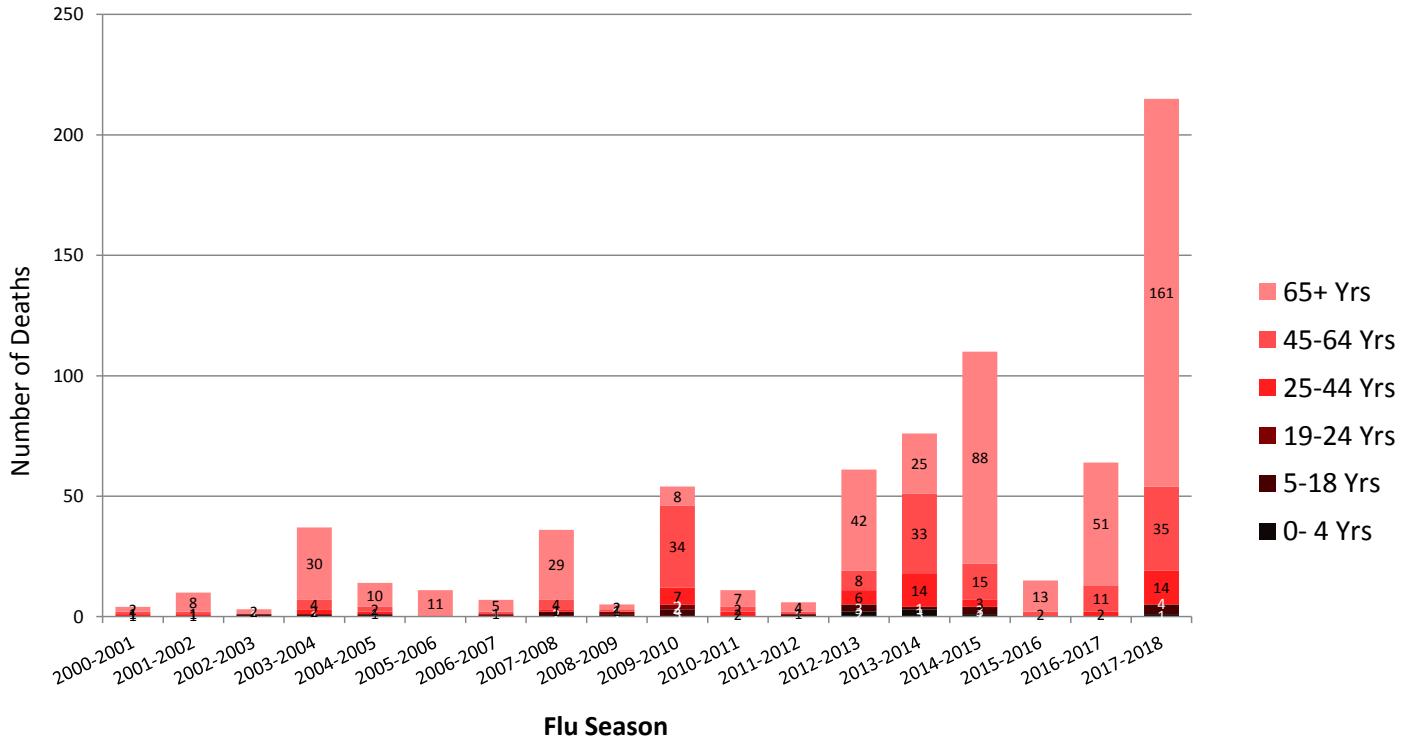
## School Absenteeism Rate per County, Arkansas 2017-2018 Percent Absent for Week Ending 4/7/2018



Date: April 10, 2018  
 Source: Arkansas Department of Health  
 Author: Haytham Safi, Epidemiologist

## Influenza Mortality by Age Group, Arkansas 2000-2017 (Provisional)

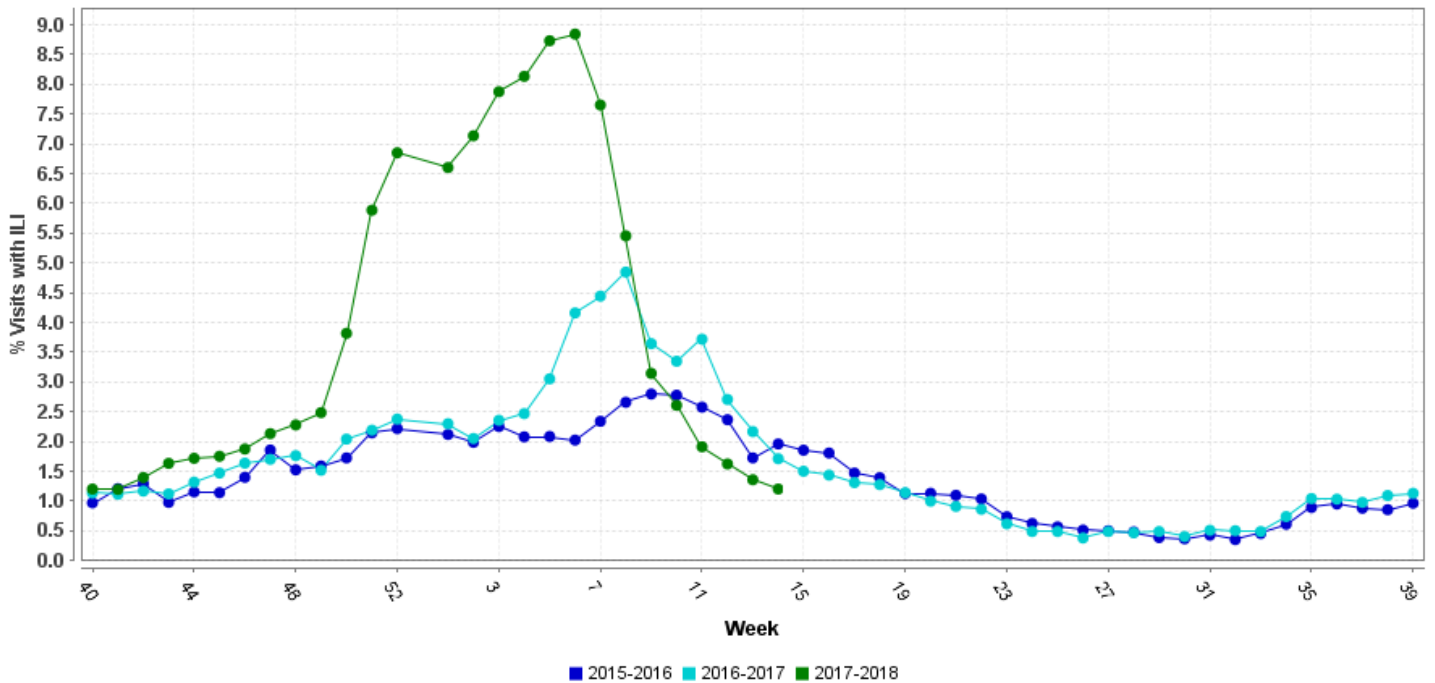
Report Updated: 04/09/2018



\* All seasons range from week 40 to week 39 except 2009-2010 started week 36  
 Source: ADH Outbreak Response Section, and Center for Health Statistics

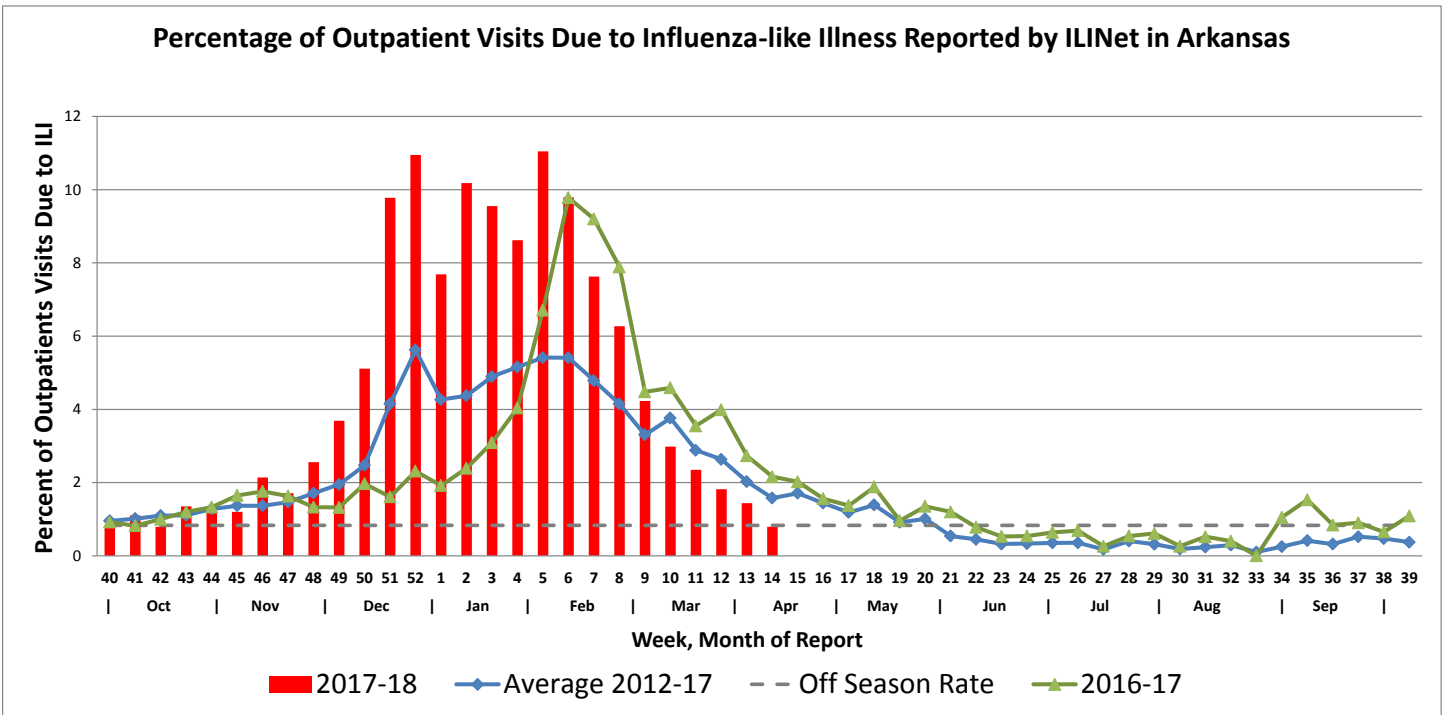
## Hospital Report – Downloaded from ESSENCE (Syndromic Surveillance)

### Percent ER Visits with ILI



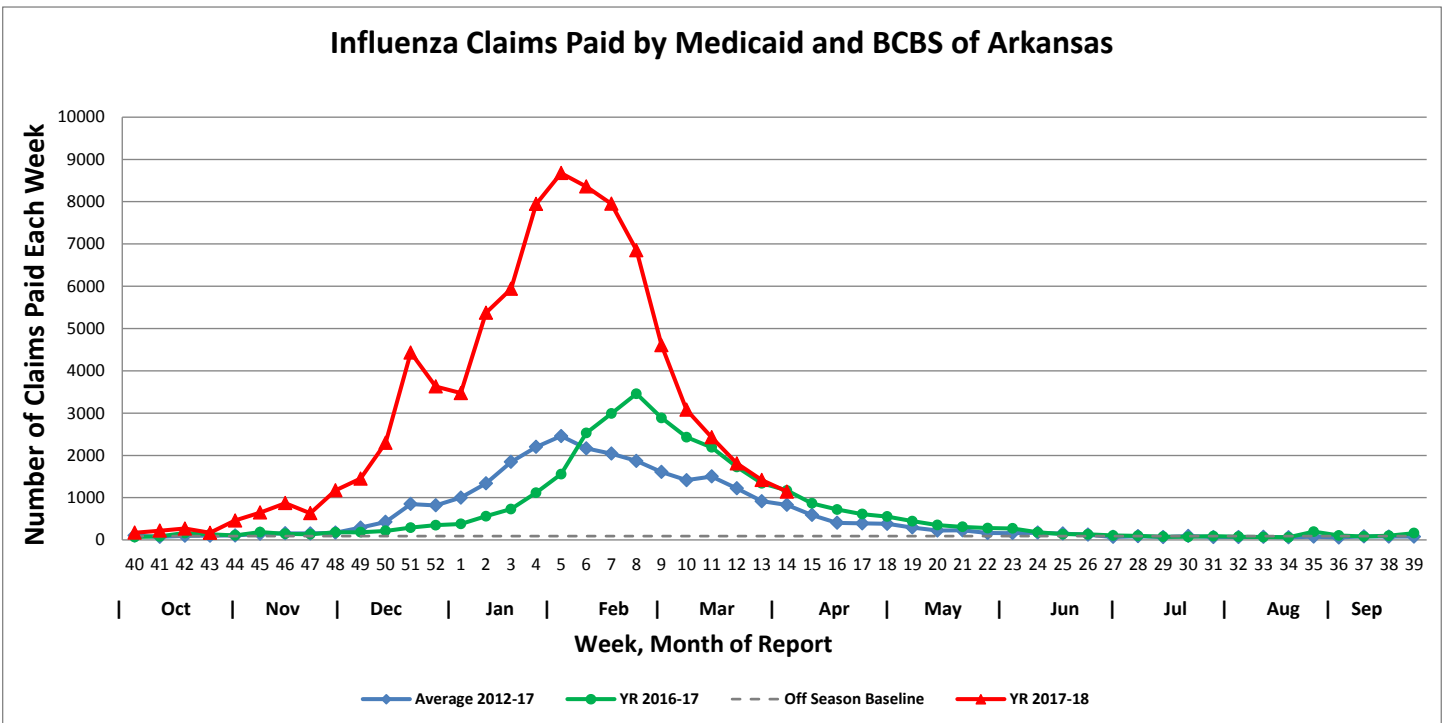
## Arkansas Subset of US Outpatients Influenza Surveillance (ILINET)

### Percentage of Outpatient Visits Due to Influenza-like Illness Reported by ILINet in Arkansas



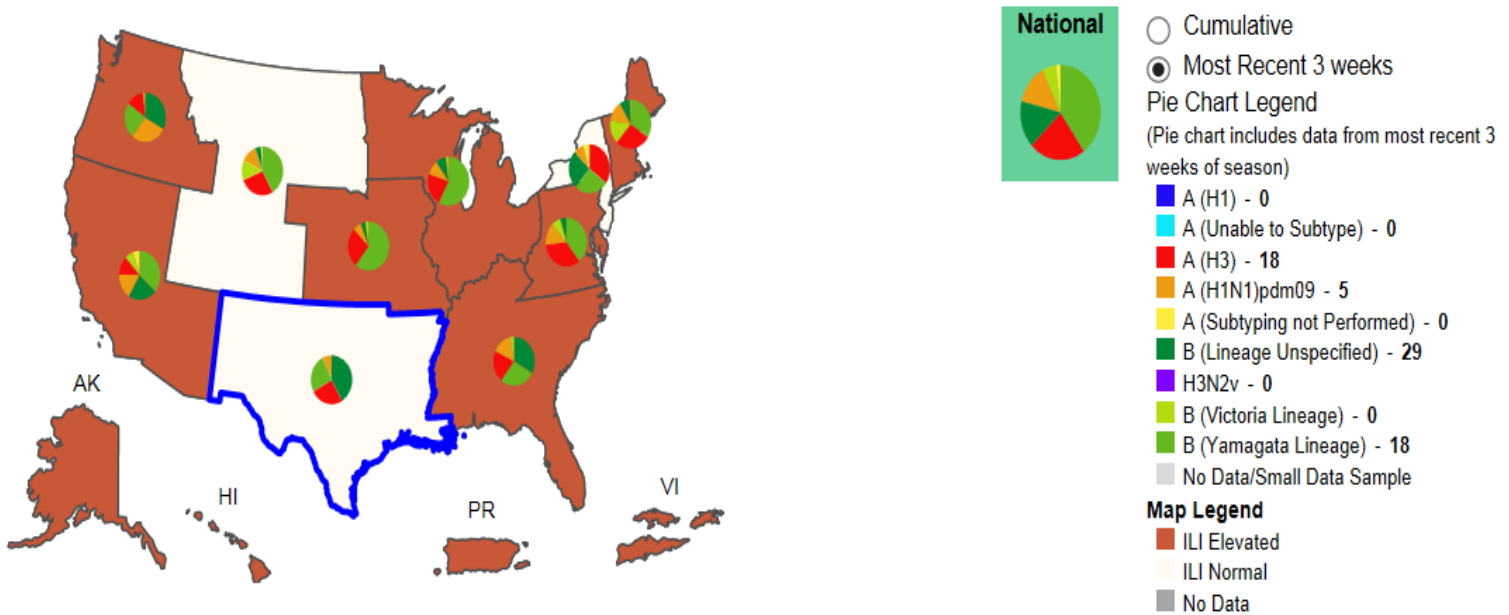
## Weekly Influenza Claims Paid by Medicaid and BCBS

### Influenza Claims Paid by Medicaid and BCBS of Arkansas



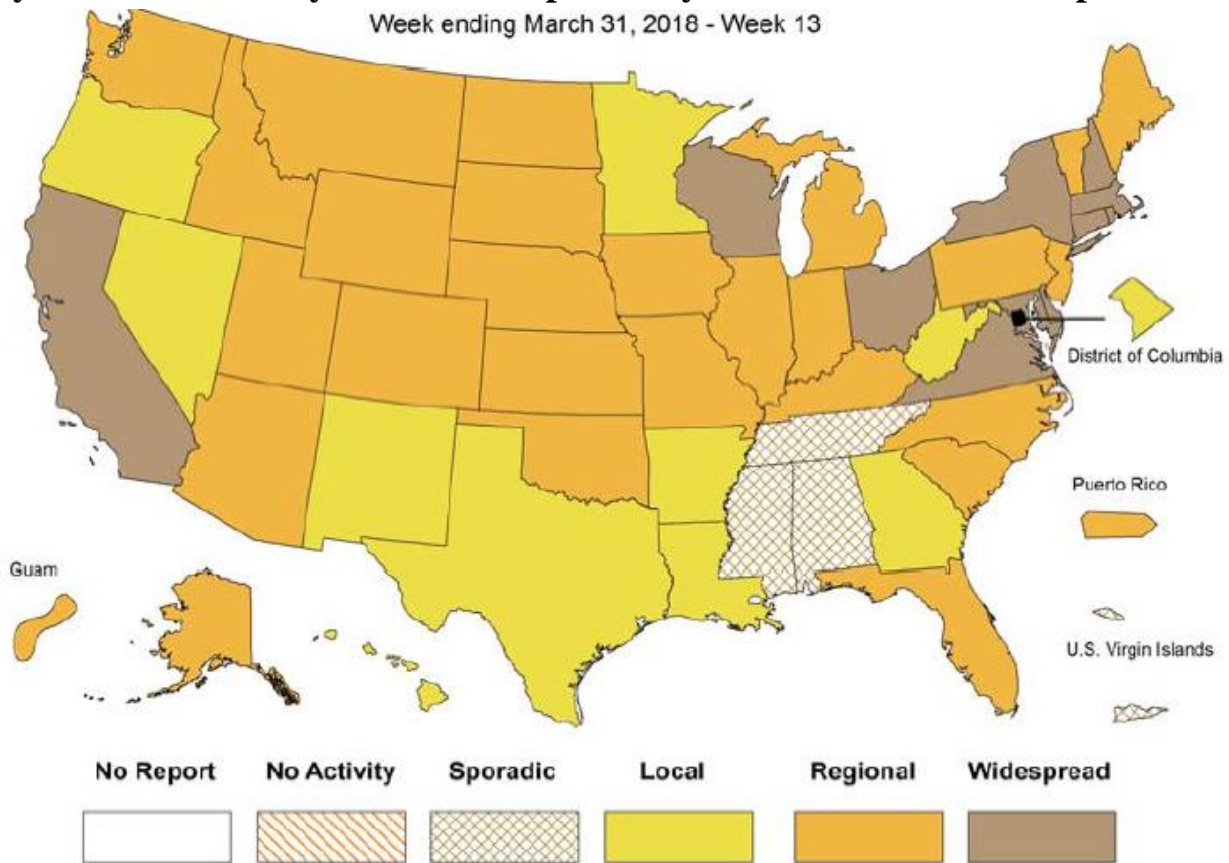
# Influenza Positive Tests Reported to CDC and ILI Activity, by HHS Region, 2017-2018 Season, Week Ending March 31, 2018

Values in legend is for the highlighted HHS region (Region 6)



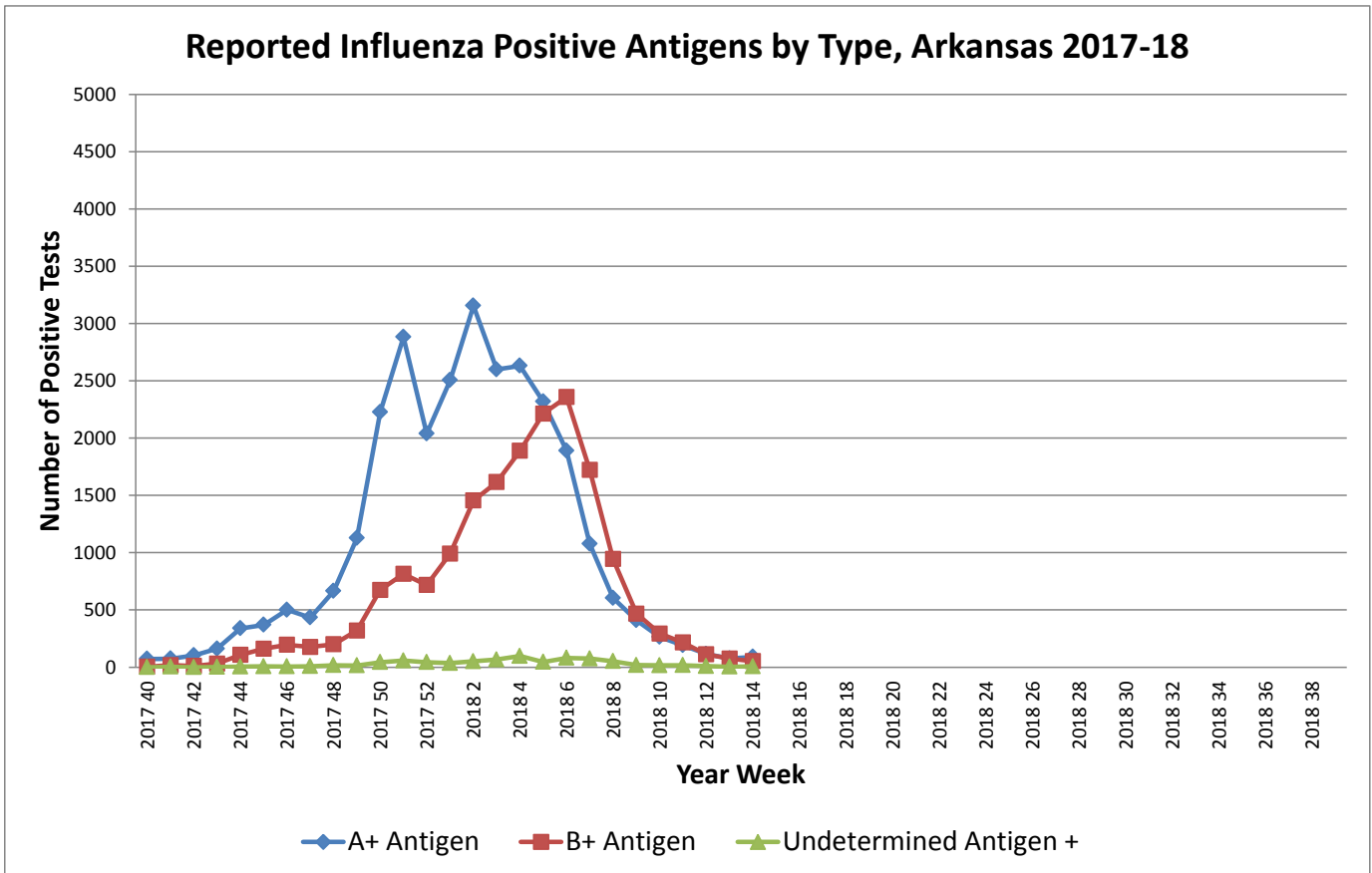
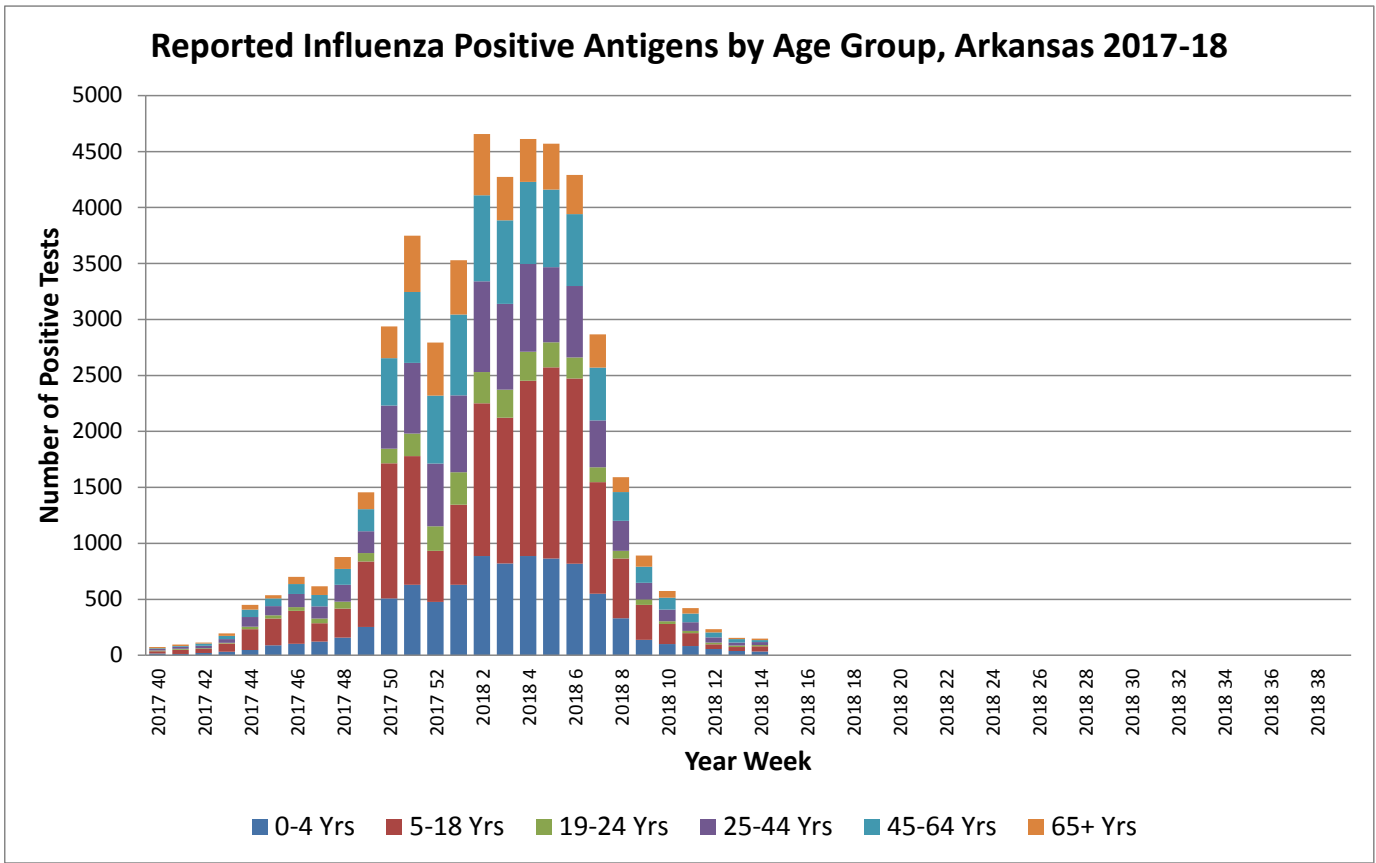
## Weekly Influenza Activity Estimates Reported by State and Territorial Epidemiologists

Week ending March 31, 2018 - Week 13



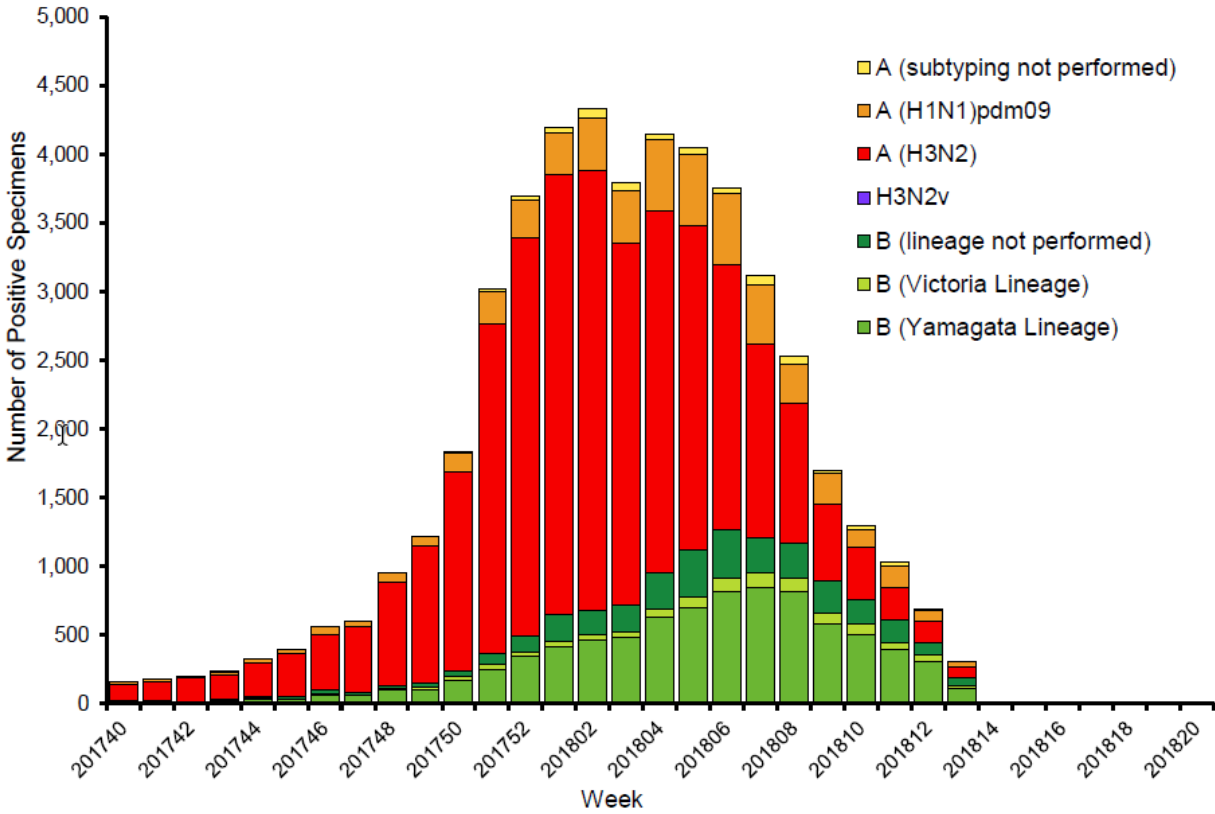
**Arkansas Flu Activity Level Reported for Week 14: Local**

# Antigen Report





### Influenza Positive Tests Reported to CDC by U.S. Public Health Laboratories, National Summary, 2017-18 Season



### Pneumonia and Influenza Mortality from the National Center for Health Statistics Mortality Surveillance System Data through the week ending March 17, 2017, as of April 5, 2018

