



ARKANSAS

DEPARTMENT OF HEALTH

Nathaniel Smith, MD, MPH, Director and State Health Officer

Outbreak Response/Epidemiology Influenza Weekly Report Arkansas 2018-2019

Week Ending Saturday 01/26/2019

Dirk Haselow, MD, PhD

State Epidemiologist, Medical Director, Outbreak Response

Shirley Louie, MS, CIH

Deputy State Epidemiologist, Director, Center for Public Health Practice

Prepared by:

Haytham Safi, MD, MPH

Influenza Surveillance Coordinator

Haytham.Safi@Arkansas.gov

501-661-2920

Mike Cima, PhD

Chief Epidemiologist, Preparedness & Outbreak Response

Reviewed by:

Lori Simmons, MS

Branch Chief, Epidemiology

During the flu season the Arkansas Department of Health (ADH) produces a Weekly Influenza Report for clinicians. The report provides information on flu activity in the state. The report also compares influenza like illness (ILI) in Arkansas to activity in the U.S. ADH receives reports of only a fraction of flu cases. Therefore, it is important to understand that the information in the weekly update is representative of the timing and location of activity, but it does not reflect the overall burden of disease. It is presumed that there are many more people actually affected than the report shows. Clinicians and policy makers may find the report helpful in terms of communicating to colleagues and patients about the current status of the flu season.

Report Key Points:

- For Week 4, Arkansas reported “Widespread” activity to the Centers for Disease Control and Prevention (CDC) for geographic spread of influenza, and “High” or 10/10 for ILI intensity.
- Since September 30, 2018, over 5,100 positive influenza tests have been reported to the ADH online database by health care providers. In Week 4, 57 counties reported influenza cases. The majority of reports came from Benton, Washington, Pulaski, Sebastian, Crawford, Pope, Craighead, Baxter, Carroll, Johnson, White, Hot Spring, and Saline.
- Among flu antigen tests that can distinguish between influenza A and B virus types, 82 percent were influenza A, and 18 percent were influenza B.
- There are 81 positive PCR flu tests this week from private labs: 69 tested positive for influenza A, 8 tested positive for influenza B, 3 tested positive for influenza A subtype H1N1 and 1 positive for influenza A subtype H3N2. At the ADH lab, 1 tested positive for influenza A subtype H1N1, 2 positive for influenza A subtype H3N2, and 1 sample tested negative for influenza this week.
- About 2.5 percent of patients visiting emergency rooms this week were there for ILI. About 4.6 percent of outpatient visits were for ILI.
- The average school absenteeism rate last week was 6.9 percent among public schools.
- To date, 17 influenza-related deaths have been reported in Arkansas this flu season, including one pediatric death. CDC has reported a total of 22 pediatric deaths nationwide this season.
- No reports of influenza outbreaks were reported from nursing homes or other facilities this season.
- The proportion of deaths reported to the National Center for Health Statistics attributed to pneumonia and influenza (P&I) was above the system-specific epidemic threshold.
- For Week 3, the geographic spread of influenza was reported as widespread in 36 states; Puerto Rico and 11 states reported regional activities; 3 states reported local activities; the District of Columbia, and the U.S. Virgin Islands reported sporadic activities, and Guam did not report.
- You can report flu year-round and view the weekly influenza report during the influenza season at: <http://www.healthy.arkansas.gov/programs-services/topics/influenza>.
You can also access the reporting website directly at: <https://FluReport.ADH.Arkansas.gov>

For Additional National and International Influenza Surveillance Information:
World Health Organization (WHO): http://www.who.int/influenza/gisrs_laboratory/flunet/en/index.html.
CDC - Seasonal Influenza (Flu) - Weekly Report: <http://www.cdc.gov/flu/weekly/>

2018-2019 Influenza Outbreak Response/Epi Report (Week 4: 01/20/19 – 01/26/19)

Death Report for Week 4

- Deaths from all causes: 653
- Deaths due to Pneumonia: 50
- PCR confirmed Flu Deaths: 0
- Death Certificate or Flu Antigen only: 2

Cumulative Flu Deaths since 09/30/2018

- PCR confirmed Flu deaths: 1
- Death Certificate or Antigen only: 16
- Cumulative Flu deaths: 17

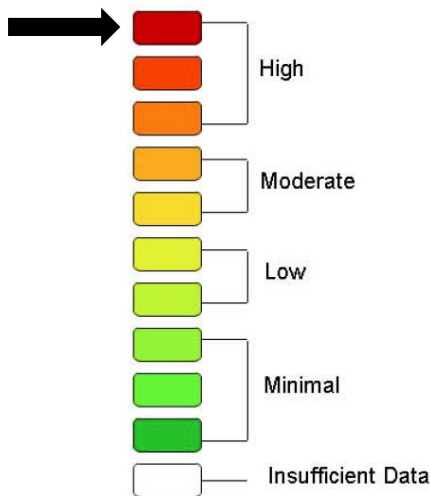
ER Visits

- **Week Ending: 01/26/2019**
Weighted Average: 2.5%
– Total Visits: 20,641
– Visits with ILI: 518
- **Previous Week**
Weighted Average: 2.4%
– Total Visits: 20,593
– Visits with ILI: 486

Total Flu-Related Hospital Admissions

- **PCR Confirmed:**
– Cumulative: 62
– Week ending 01/26/2019: 7
- **Antigen Positive:**
– Cumulative: 207
– Week ending 01/26/2019: 9

Weekly Arkansas ILI Intensity Level Reported by Sentinel Providers



PCR Lab Confirmed Influenza Cases

- Total Cases since 09/30/2018: 571
- Week ending 01/26/2019: 84

PCR Tests	ADH Lab Week 4	Other Labs Week 4	Cumulative Cases Since 09/30/2018
A+	0	69	437
B+	0	8	79
B/Victoria	0	0	2
B/ Yamagata	0	0	0
H1N1+	1	3	32
H3+	2	1	13
Unsubtypeable	0	0	8
Total	3	81	571
Negative	1	--	--

PCR Confirmed Influenza Cases since 09/30/2018

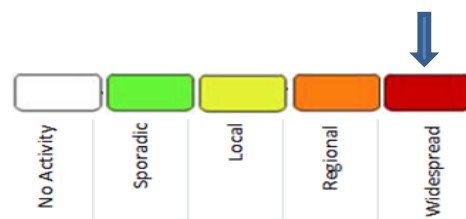
Age Groups	PCR+	Hospitalized	Deaths
0-4 yr.	127	14	1
5-18 yr.	194	6	0
19-24 yr.	11	0	0
25-44 yr.	77	2	0
45-64 yr.	98	20	0
>= 65 yr.	63	20	0
Unknown	1	0	0
Total	571	62	1

School Absenteeism*

Week Ending: 01/26/2019
 - Percent Absent: 6.87
 - Previous Week: 6.68

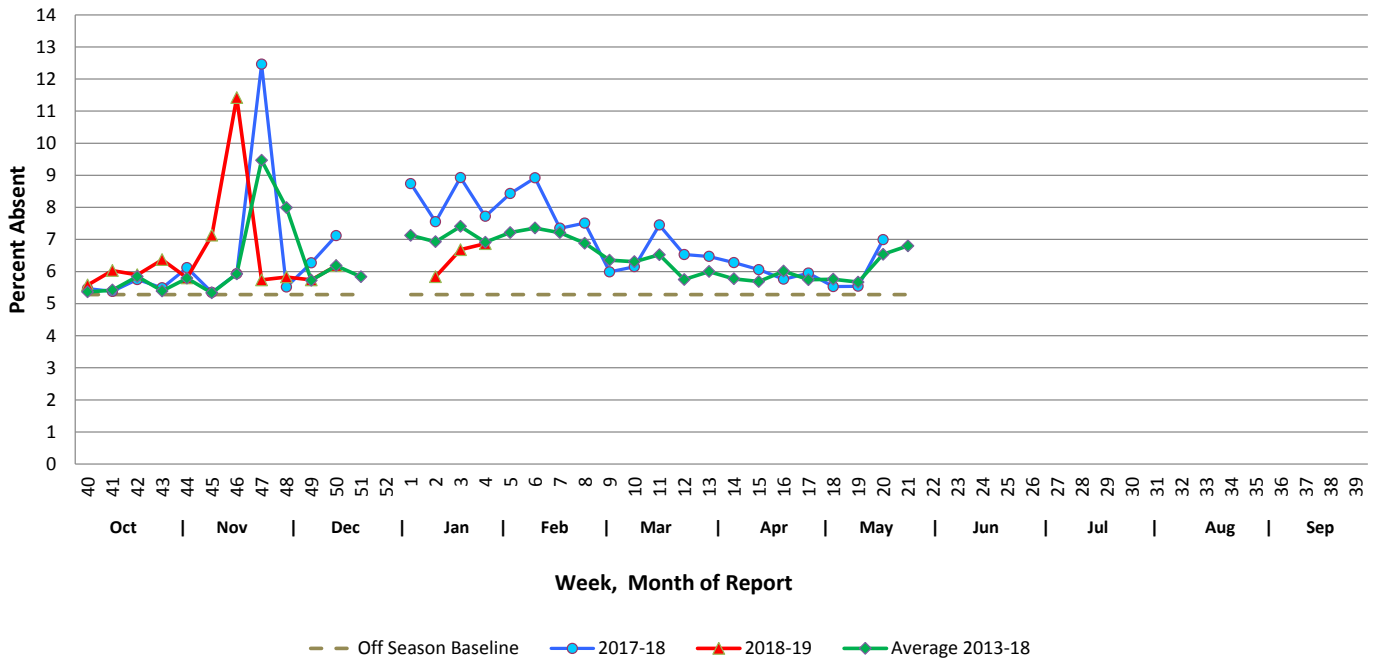
* Average daily absenteeism for all public schools during this reporting week.

Geographic ILI Activity Level Reported for Week 4:

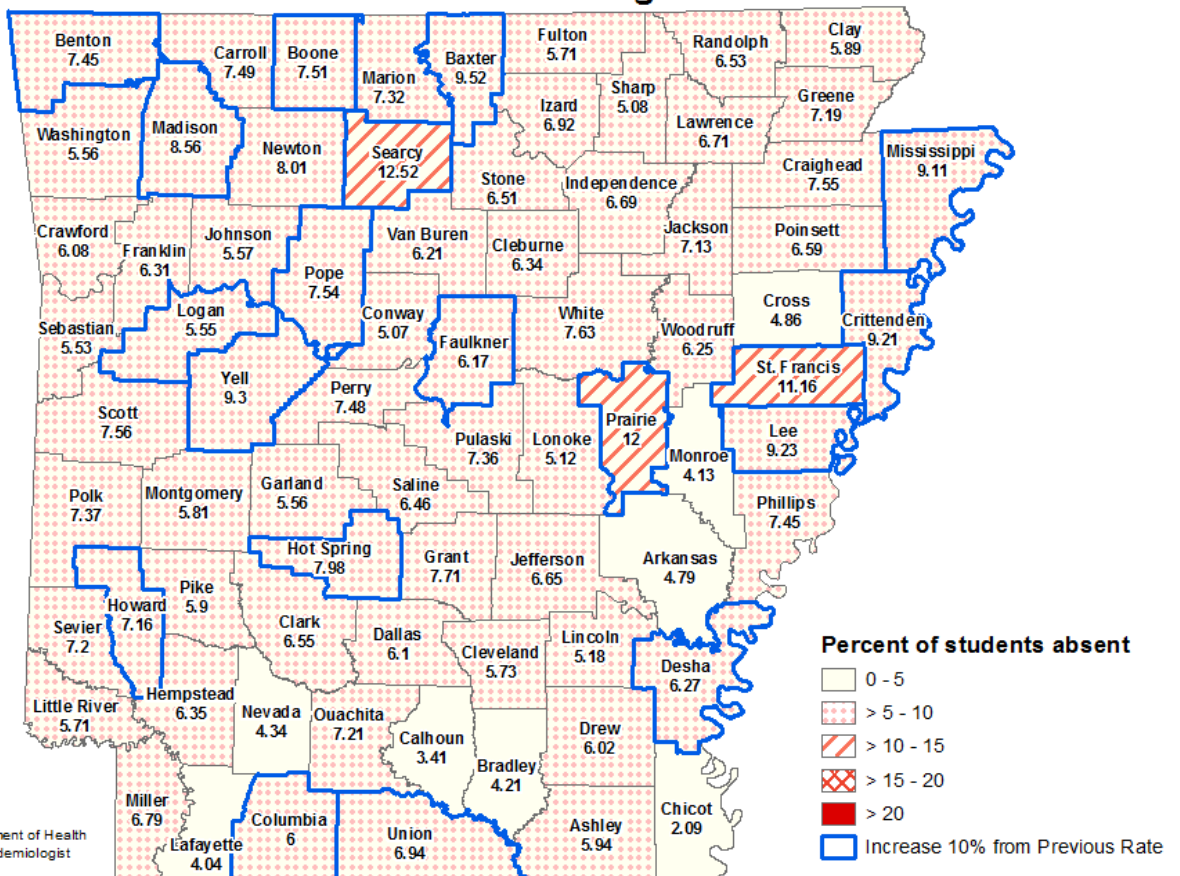


School Report

Weekly School Absenteeism Rates, Arkansas Public Schools

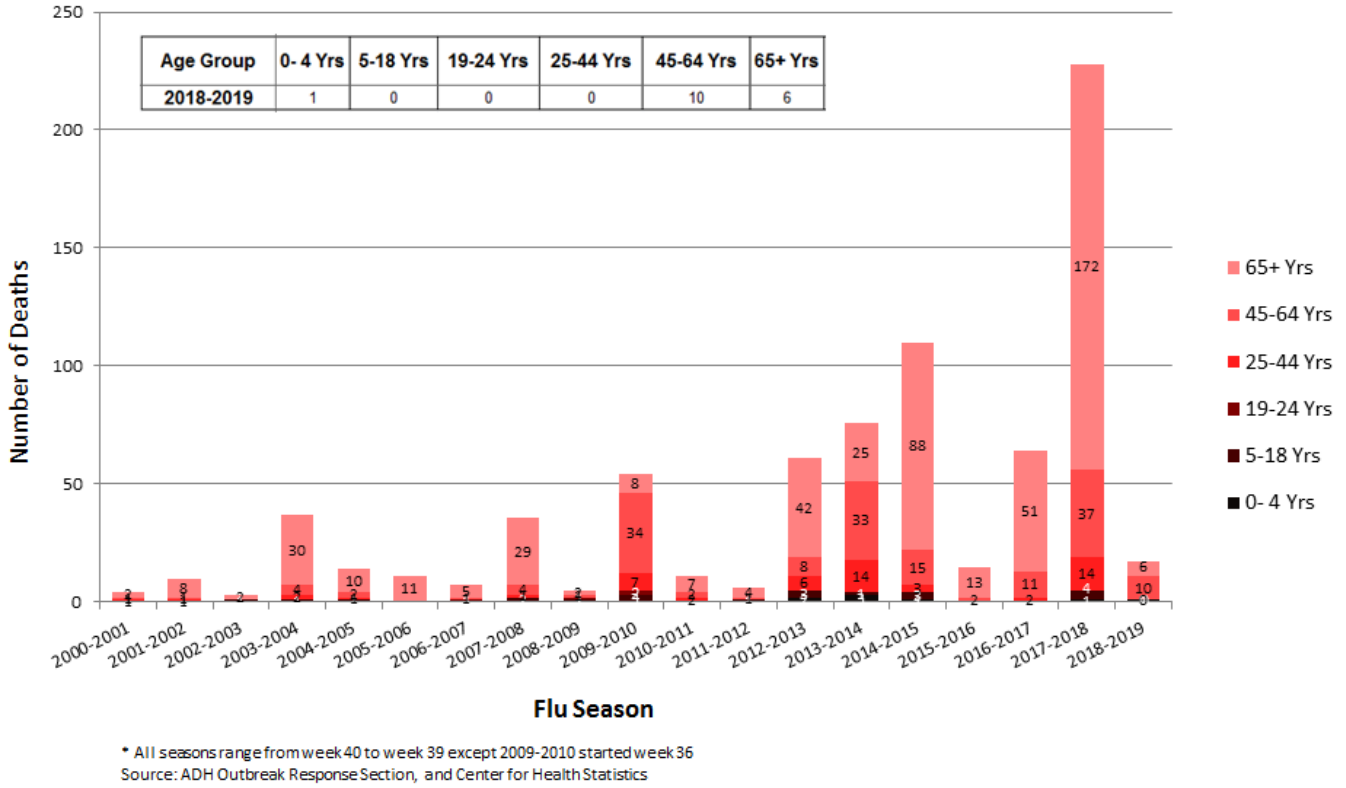


School Absenteeism Rate per County, Arkansas 2018-2019 Percent Absent for Week Ending 1/26/2019

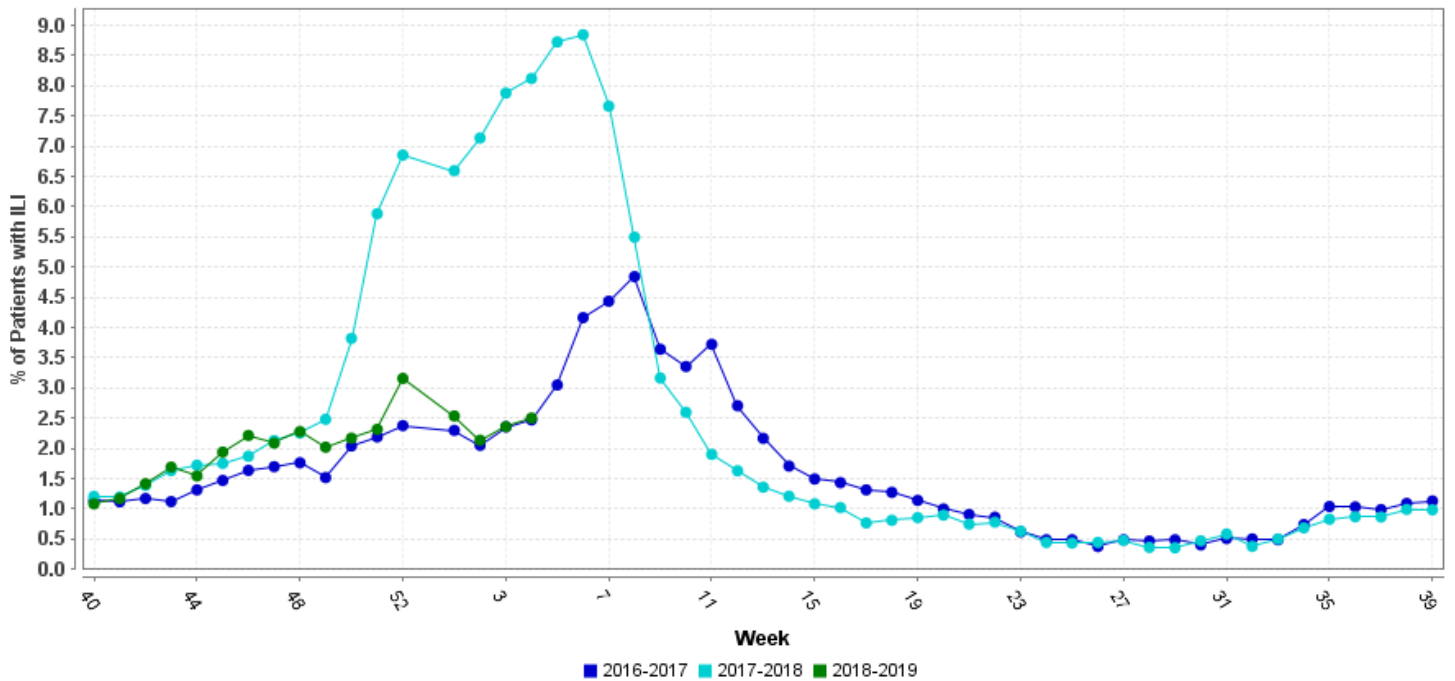


Date: January 27, 2019
 Source: Arkansas Department of Health
 Author: Haytham Safi, Epidemiologist

Influenza Mortality by Age Group, Arkansas 2000-2018 (Provisional) Report Updated: 01/27/2019

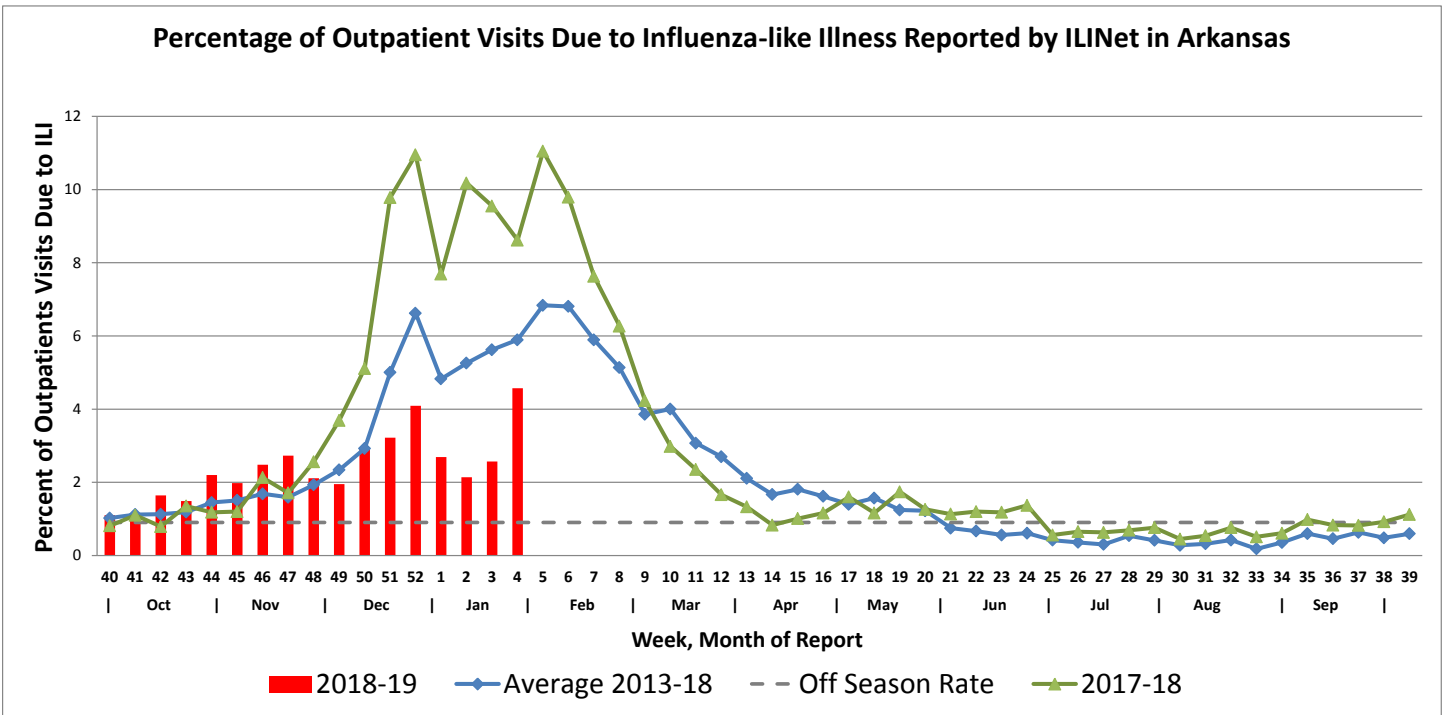


Hospital Report – Downloaded from ESSENCE (Syndromic Surveillance) Percent ER Visits with ILI



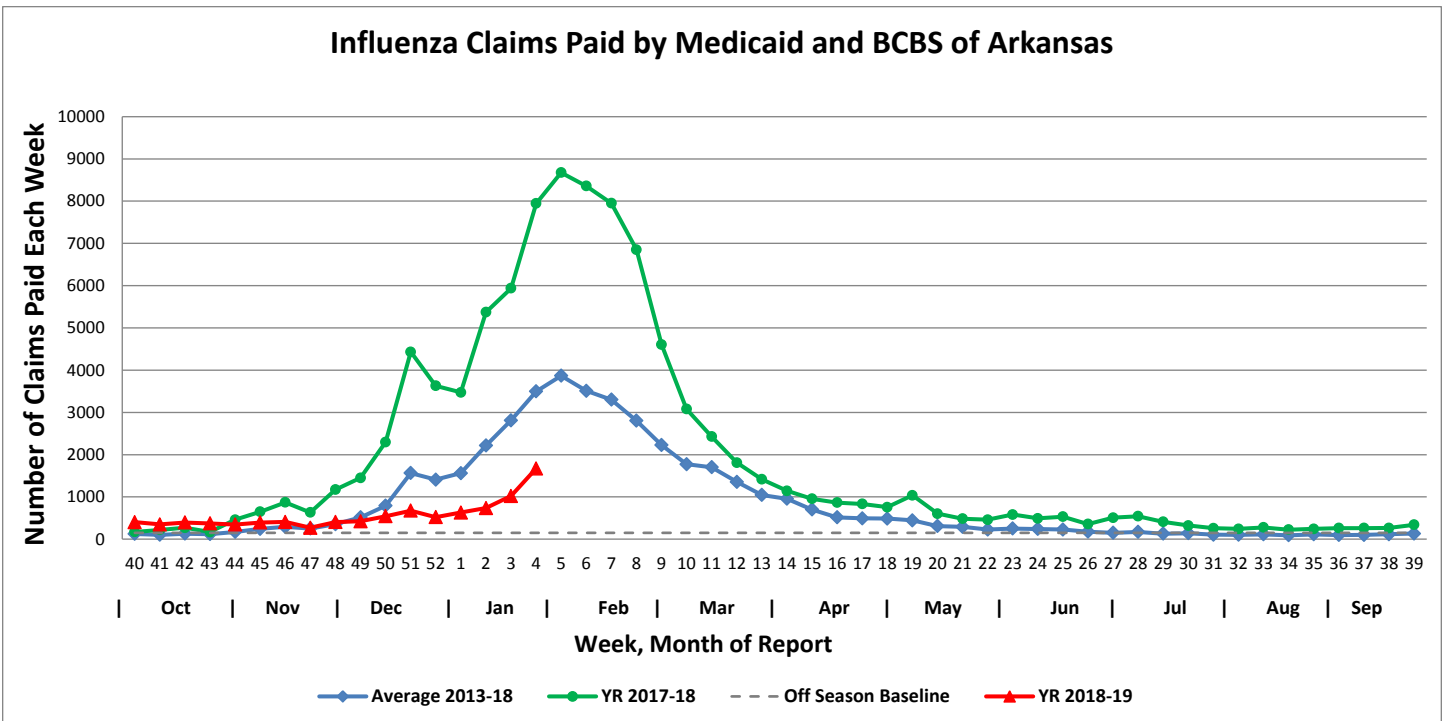
Arkansas Subset of US Outpatients Influenza Surveillance (ILINET)

Percentage of Outpatient Visits Due to Influenza-like Illness Reported by ILINet in Arkansas



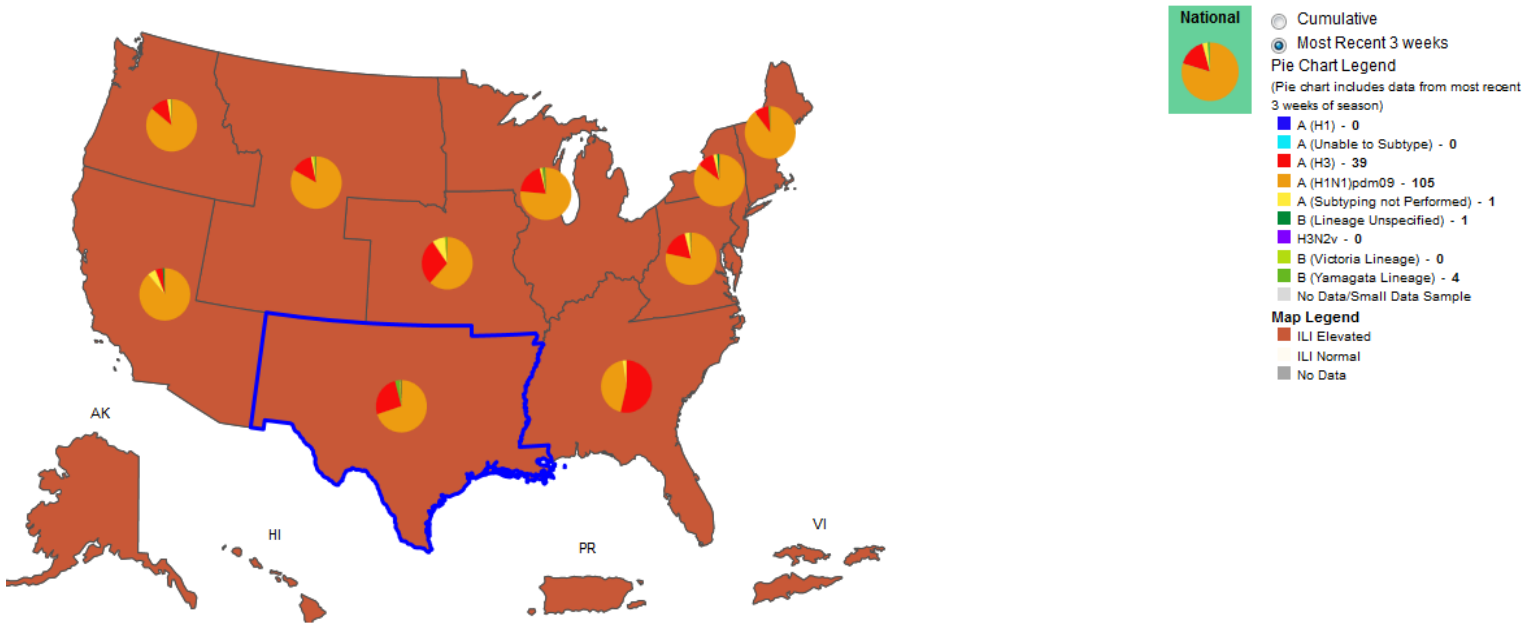
Weekly Influenza Claims Paid by Medicaid and BCBS

Influenza Claims Paid by Medicaid and BCBS of Arkansas



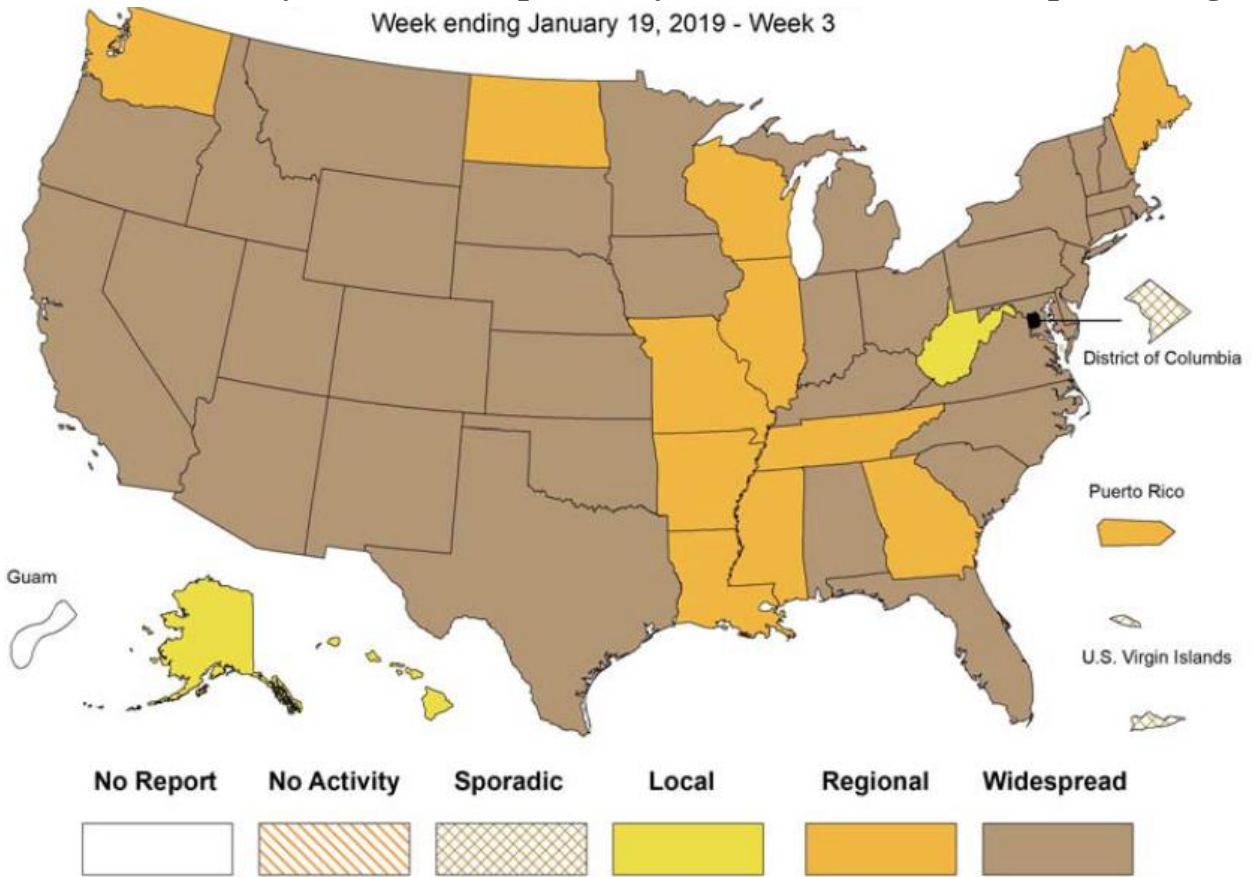
Influenza Positive Tests Reported to CDC and ILI Activity, by HHS Region, 2018-2019 Season, Week Ending Jan 19, 2018

Values in legend is for the highlighted HHS region (Region 6)



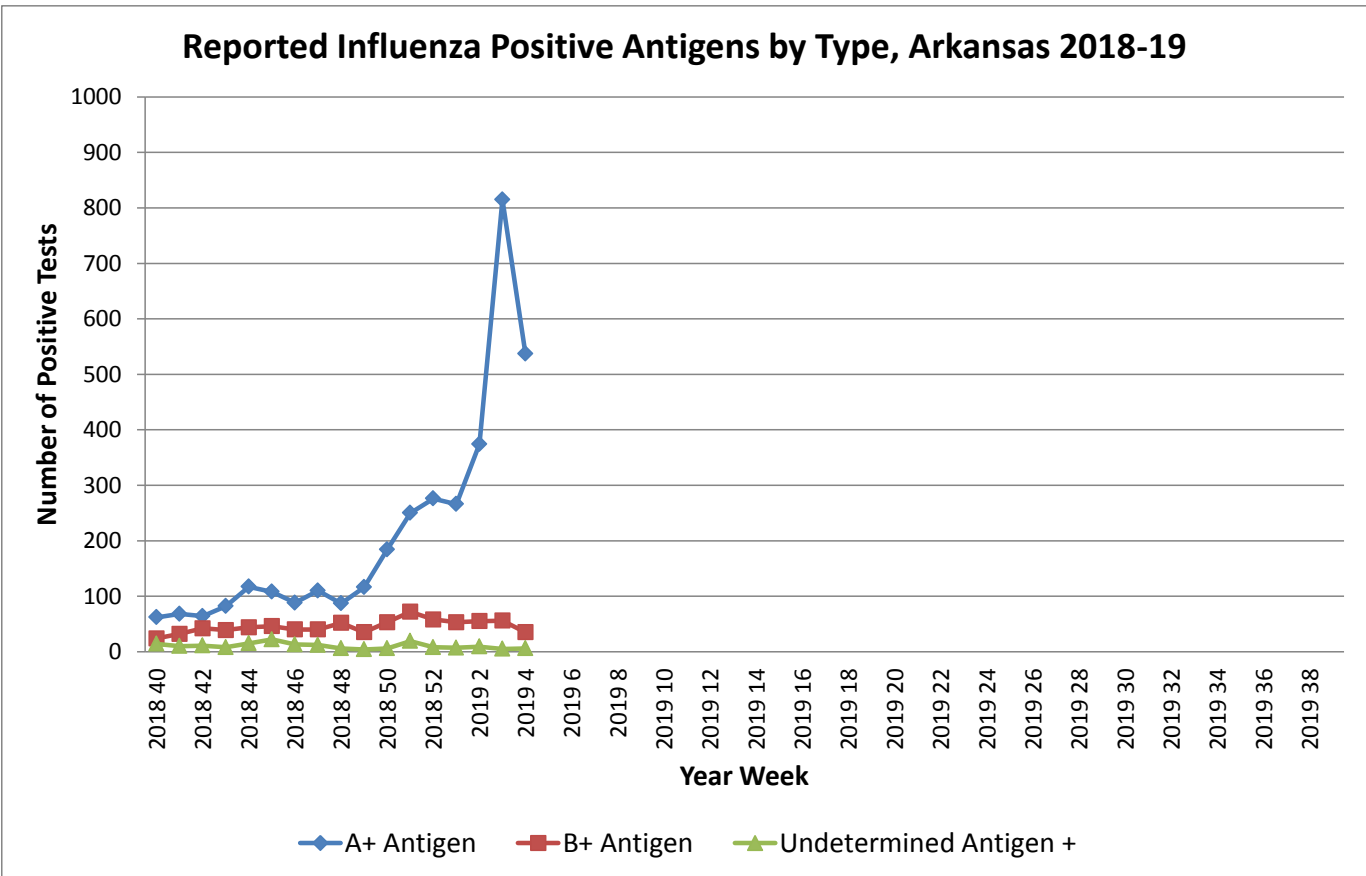
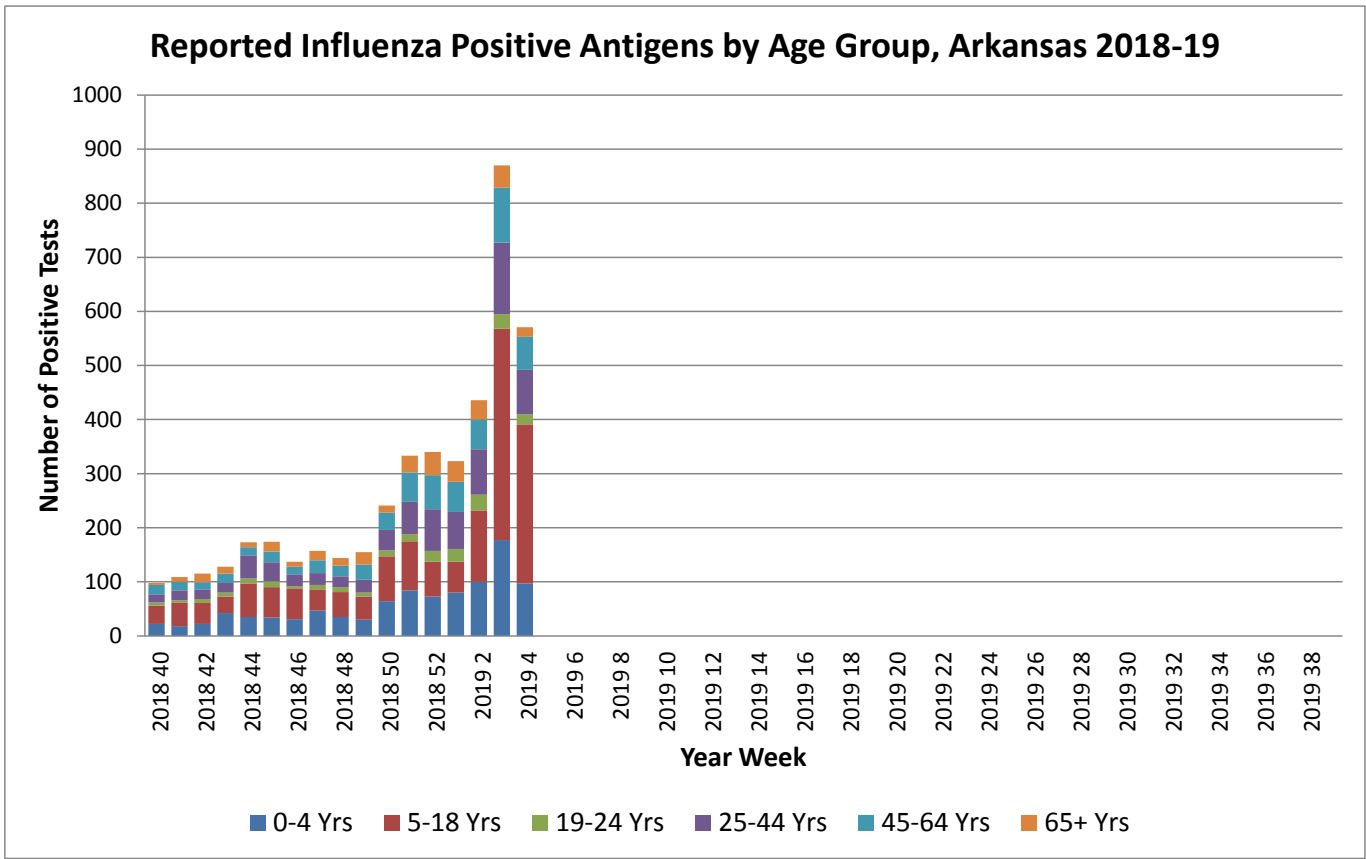
Weekly Influenza Activity Estimates Reported by State and Territorial Epidemiologists

Week ending January 19, 2019 - Week 3

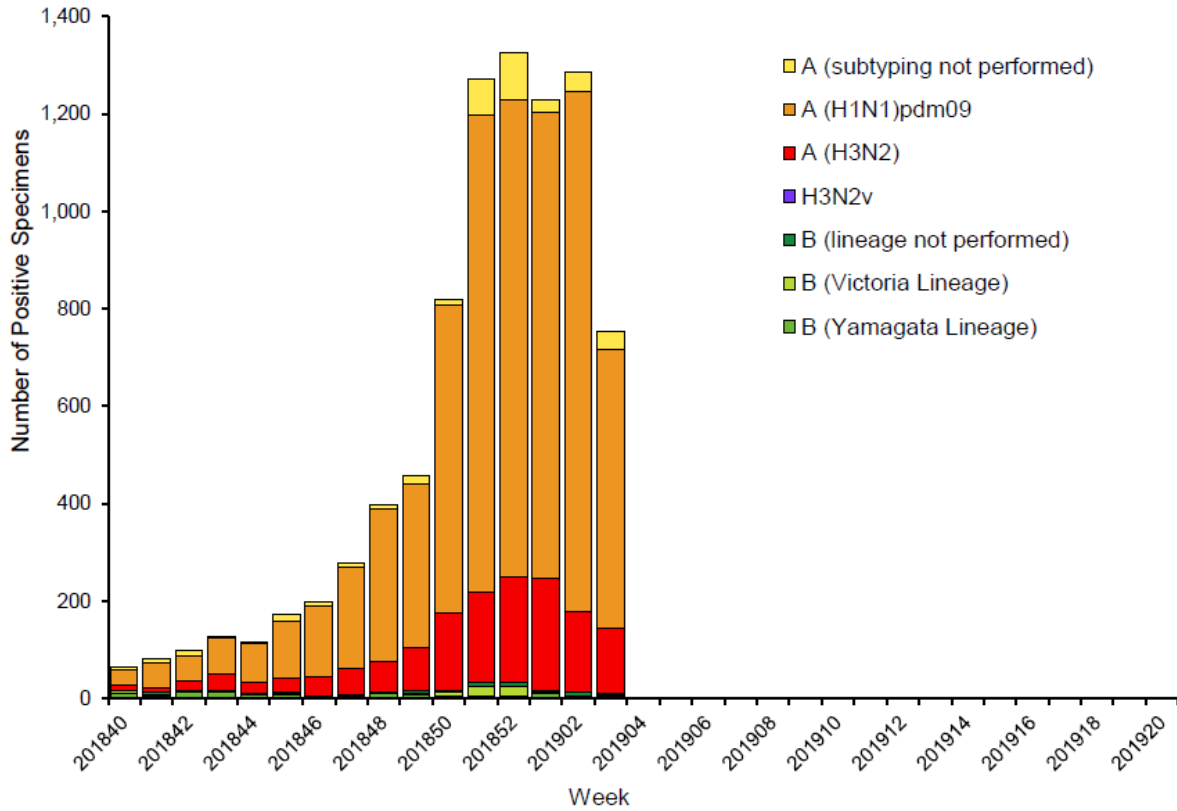


Arkansas Flu Activity Level Reported for Week 4: Widespread

Antigen Report



Influenza Positive Tests Reported to CDC by U.S. Public Health Laboratories, National Summary, 2018-19 Season



Pneumonia and Influenza Mortality from the National Center for Health Statistics Mortality Surveillance System Data through the week ending January 12, 2018, as of January 24, 2019

